



CAAC Design and Construction Update

2-16-2023



2022 Projects

New Buildings & Additions

Prospect Valley – Replacement School MOA – PHIPPS

Ribbon
Cutting



Jeffco Open - Auditorium Addition HCM - Bassett

Construction



Jeffco Open - Auditorium Addition HCM - Bassett

Construction



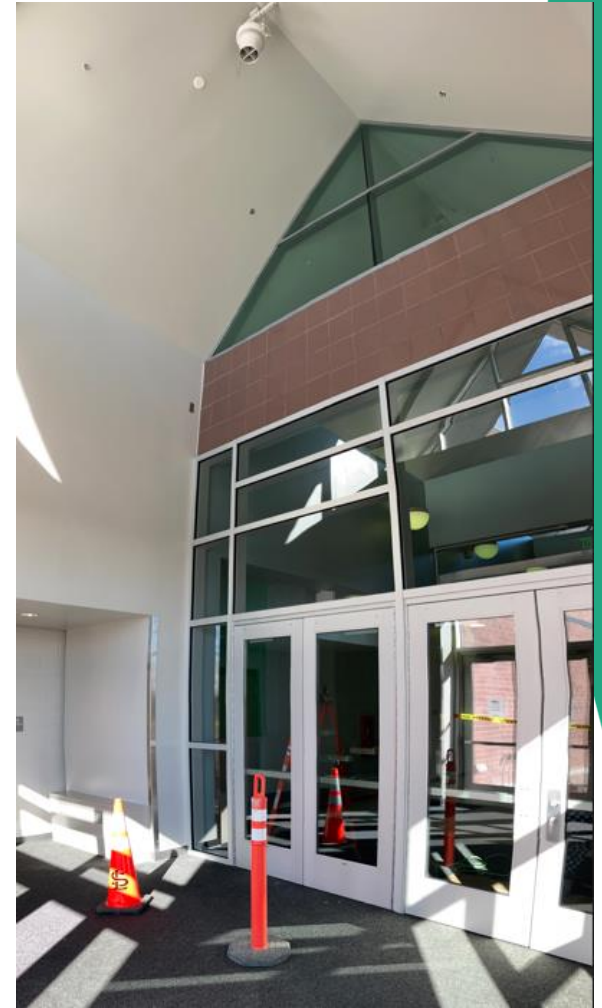
Standley Lake HS – Aux Gym Addition Cannon – FCI Constructors

Construction



Standley Lake HS – Aux Gym Addition Cannon – FCI Constructors

Construction



Standley Lake HS - Aux Gym Addition Cannon – FCI Constructors

Construction



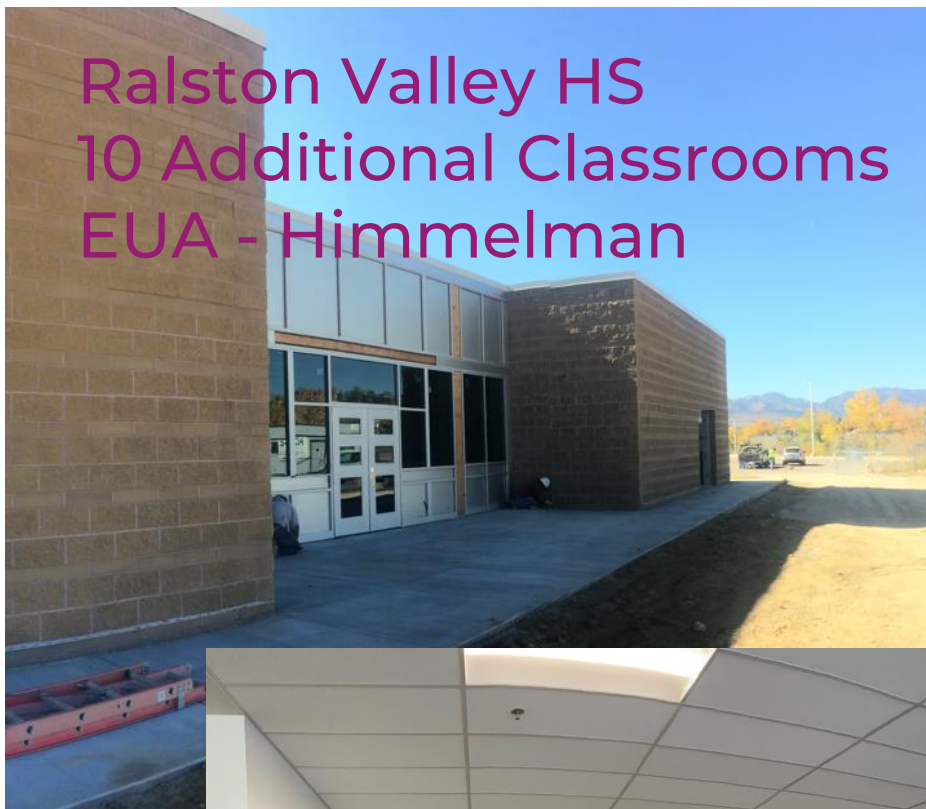
Ralston Valley HS 10 Additional Classrooms EUA - Himmelman



Ralston Valley HS 10 Additional Classrooms EUA - Himmelman



Ralston Valley HS
10 Additional Classrooms
EUA - Himmelman



Ralston Valley HS
10 Additional Classrooms
EUA - Himmelman



Efficiency Future Ready
Windy Peak OEL
HCM – Bryan

Construction



Permanent Power Scheduled Mid April

Efficiency Future Ready Windy Peak OEL HCM – Bryan

Construction



Efficiency Future Ready
Mount Evans OEL

Construction

HCM – GH Phipps



Efficiency Future Ready Mount Evans OEL HCM – GH Phipps

Construction



DW LED 2022

Ackerman – CMGC McKinstry



Construction

1. Brady
2. Bradford North
3. Bradford South
4. Ute Meadows ES
5. Leawood ES
6. Normandy ES
7. Rooney Ranch ES
8. Creighton MS
9. Moore MS
10. Mandalay MS
11. Deer Creek MS
12. Lawrence
13. Weber ES
14. Meiklejohn
15. West Woods
16. Chatfield HS
17. Dakota Ridge HS

2023 Efficiency Future Ready & DW projects

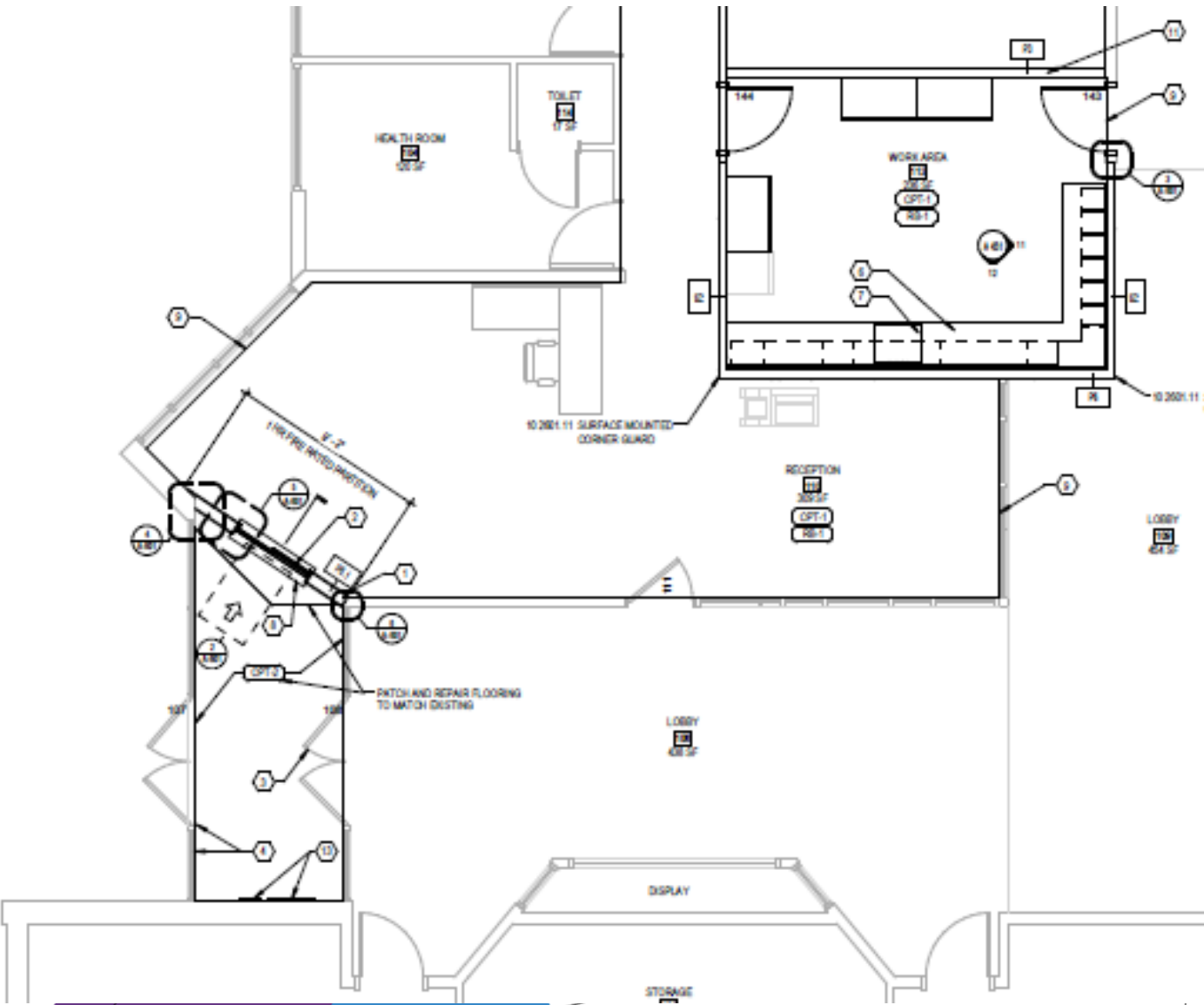
Efficiency Future Ready Wheat Ridge HS Eidos – GTC

Construction



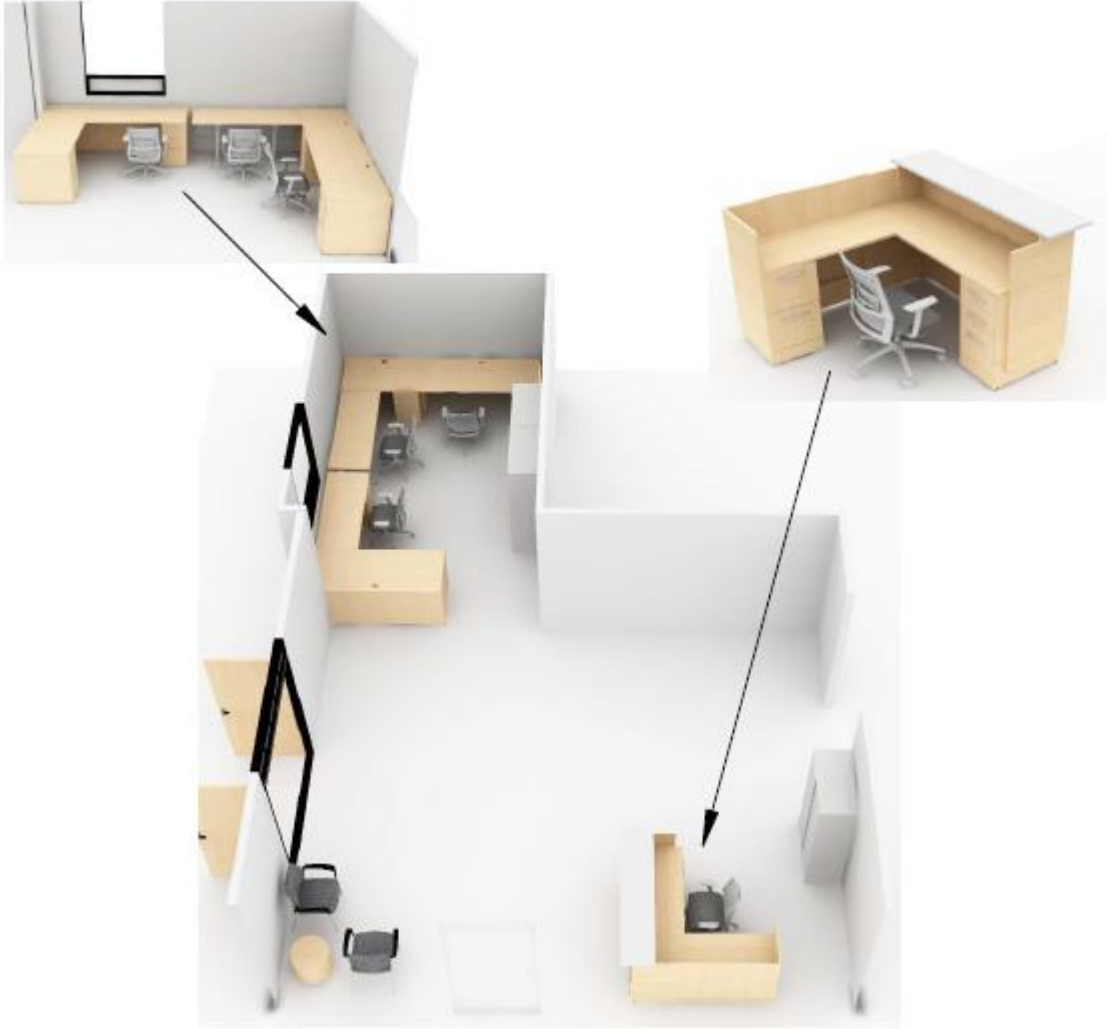
Ute Meadows ES – Efficiency Future Ready MOA – Crossland

Construction



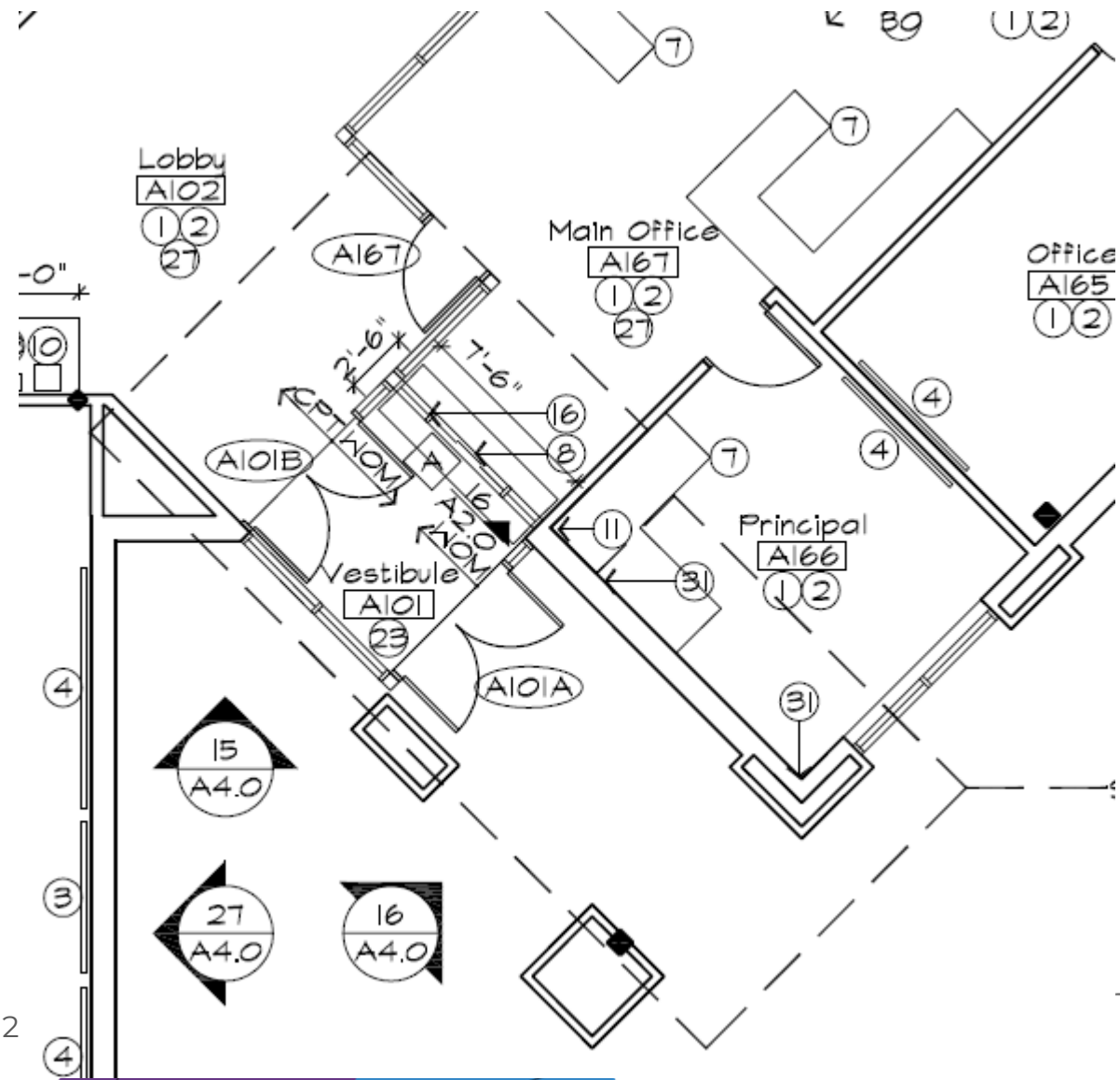
Blue Heron ES – Efficiency Future Ready MOA – Crossland

Construction



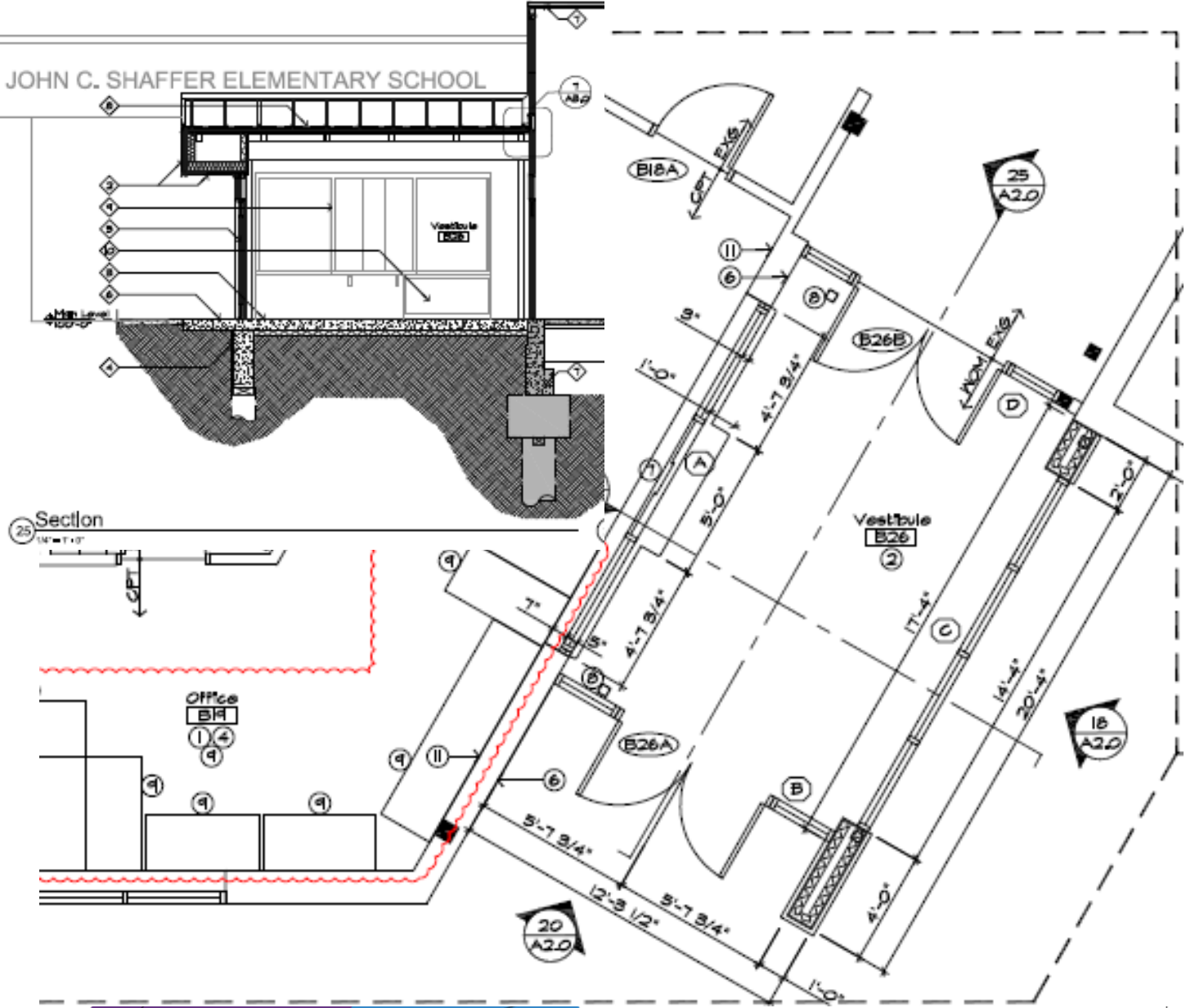
Mortensen ES – Efficiency Future Ready DLH – Crossland

Construction



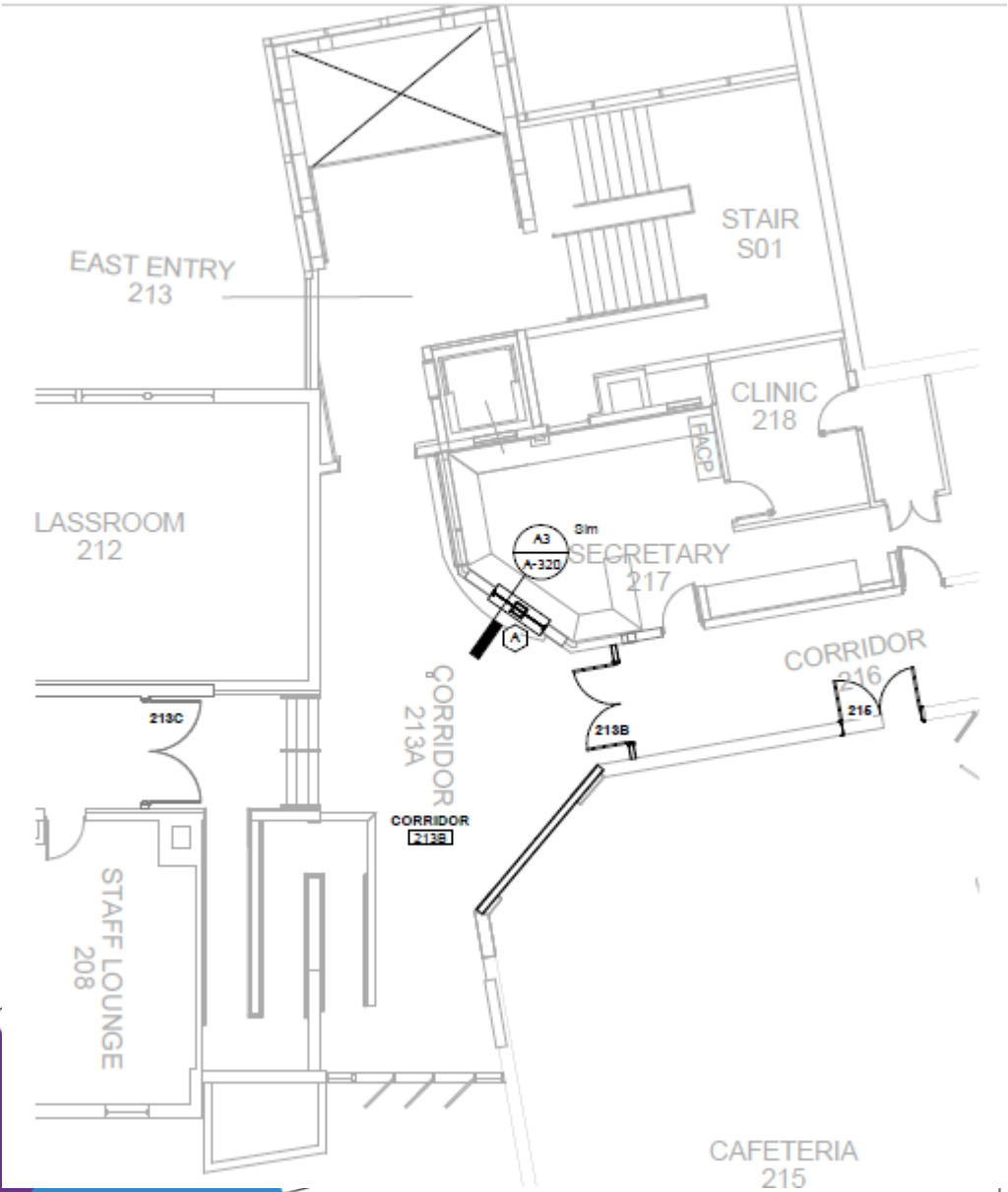
Shaffer ES – Efficiency Future Ready DLH – Crossland

Construction



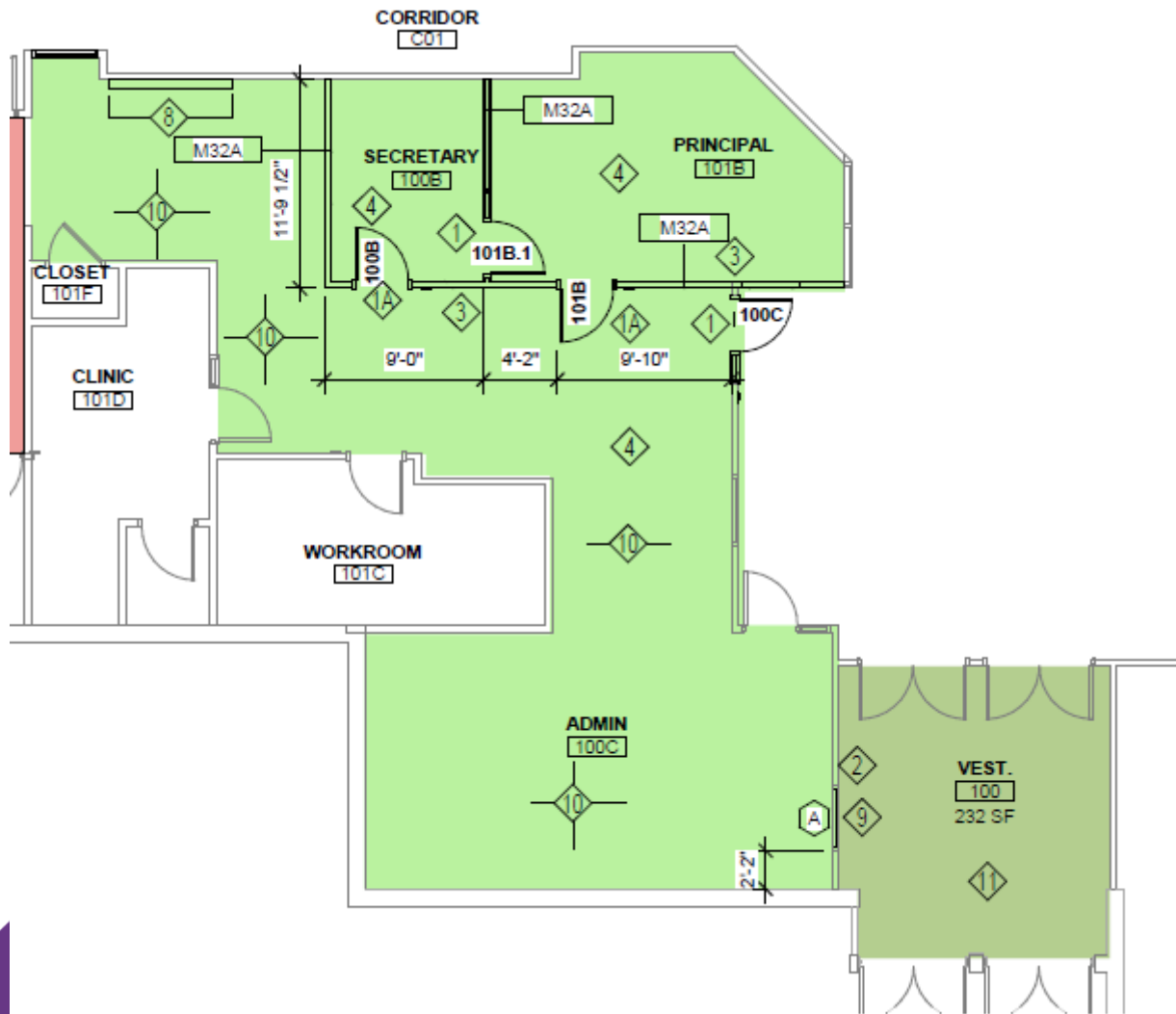
Edgewater ES – Efficiency Future Ready HCM – PG Arnold

Construction

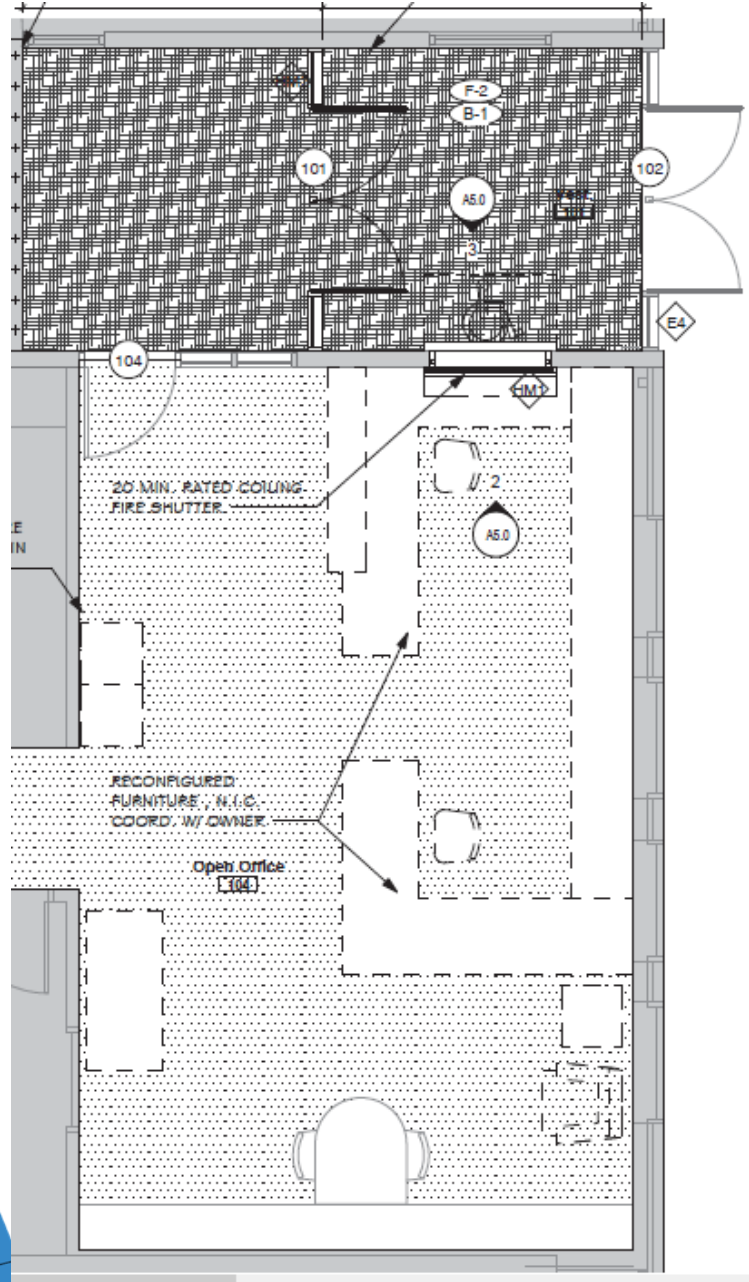


Ken Caryl MS – Efficiency Future Ready HCM – PG Arnold

Construction

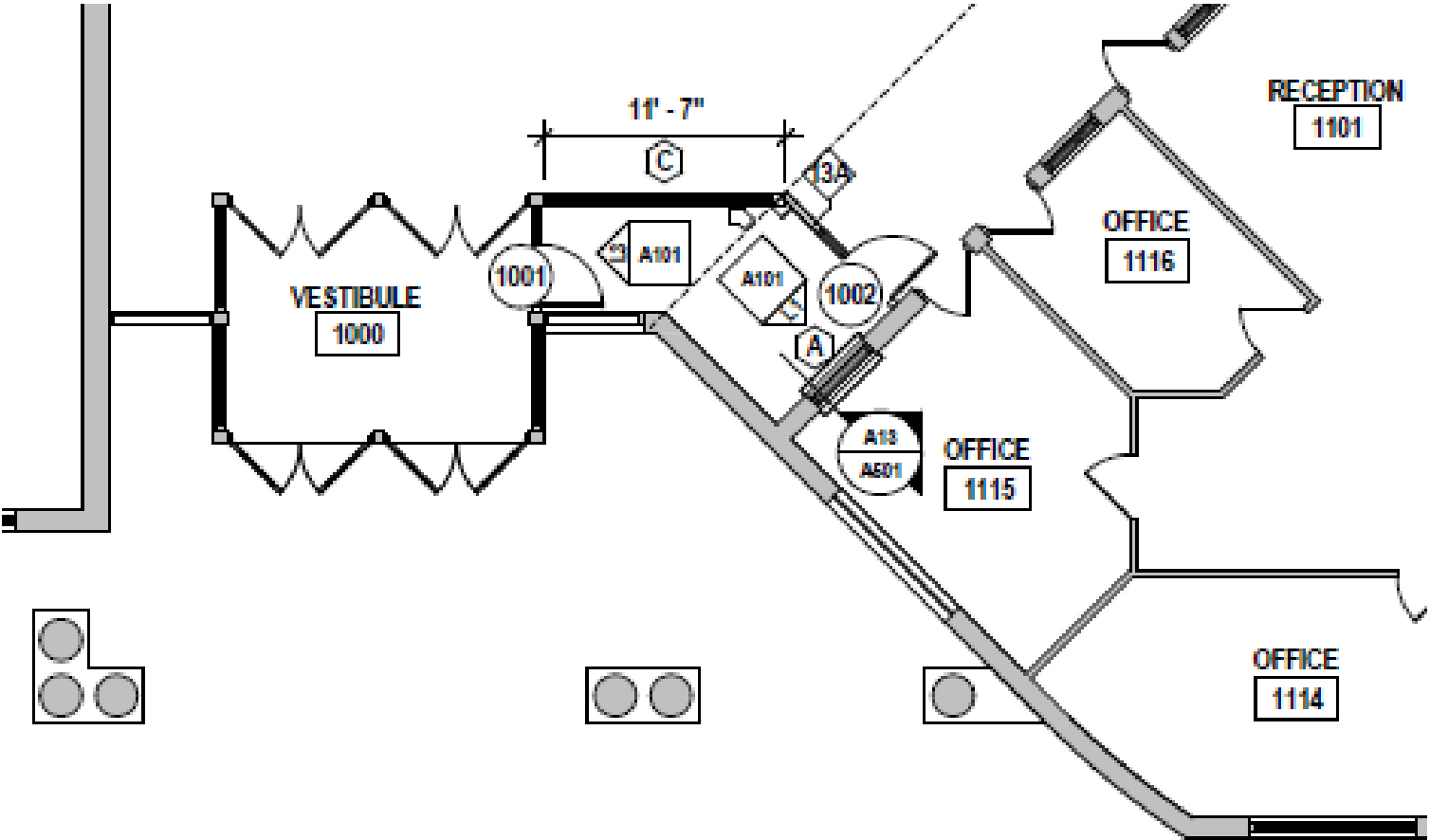


Mt Carbon – Efficiency Future Ready Eidos – Single Track



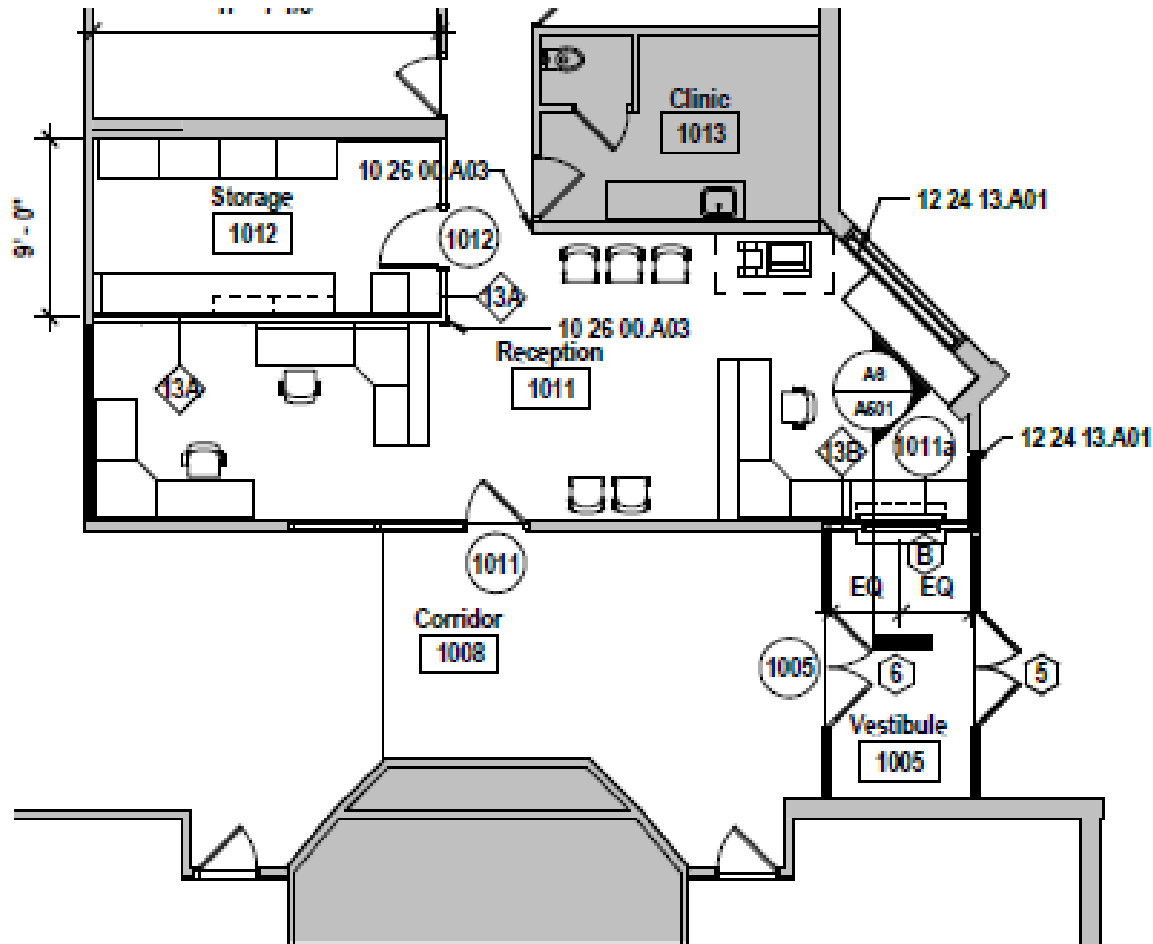
Summit Ridge MS – Efficiency Future Ready H&M – GTC

Construction

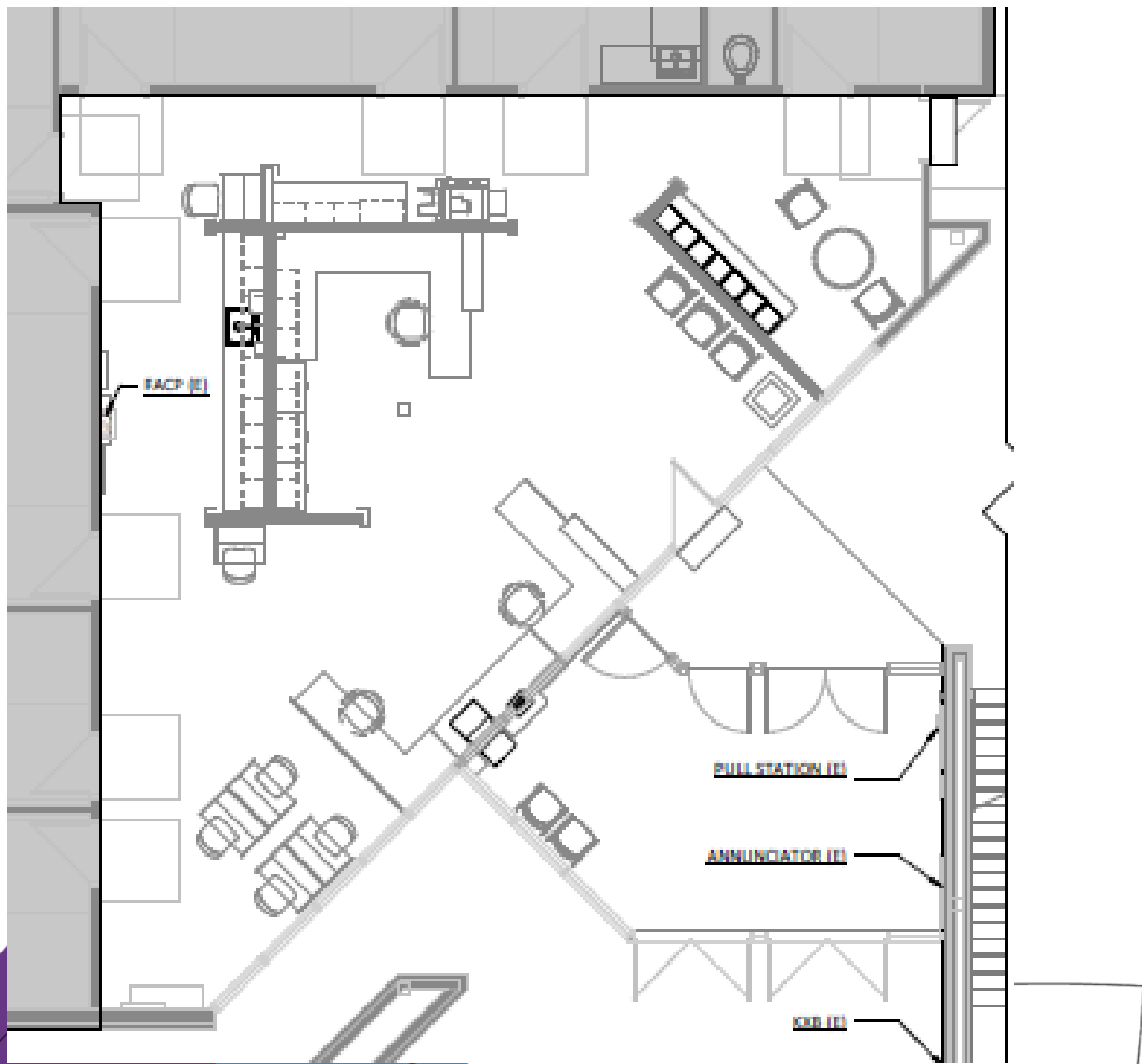


Kendallvue ES – Efficiency Future Ready H&M – GTC

Construction



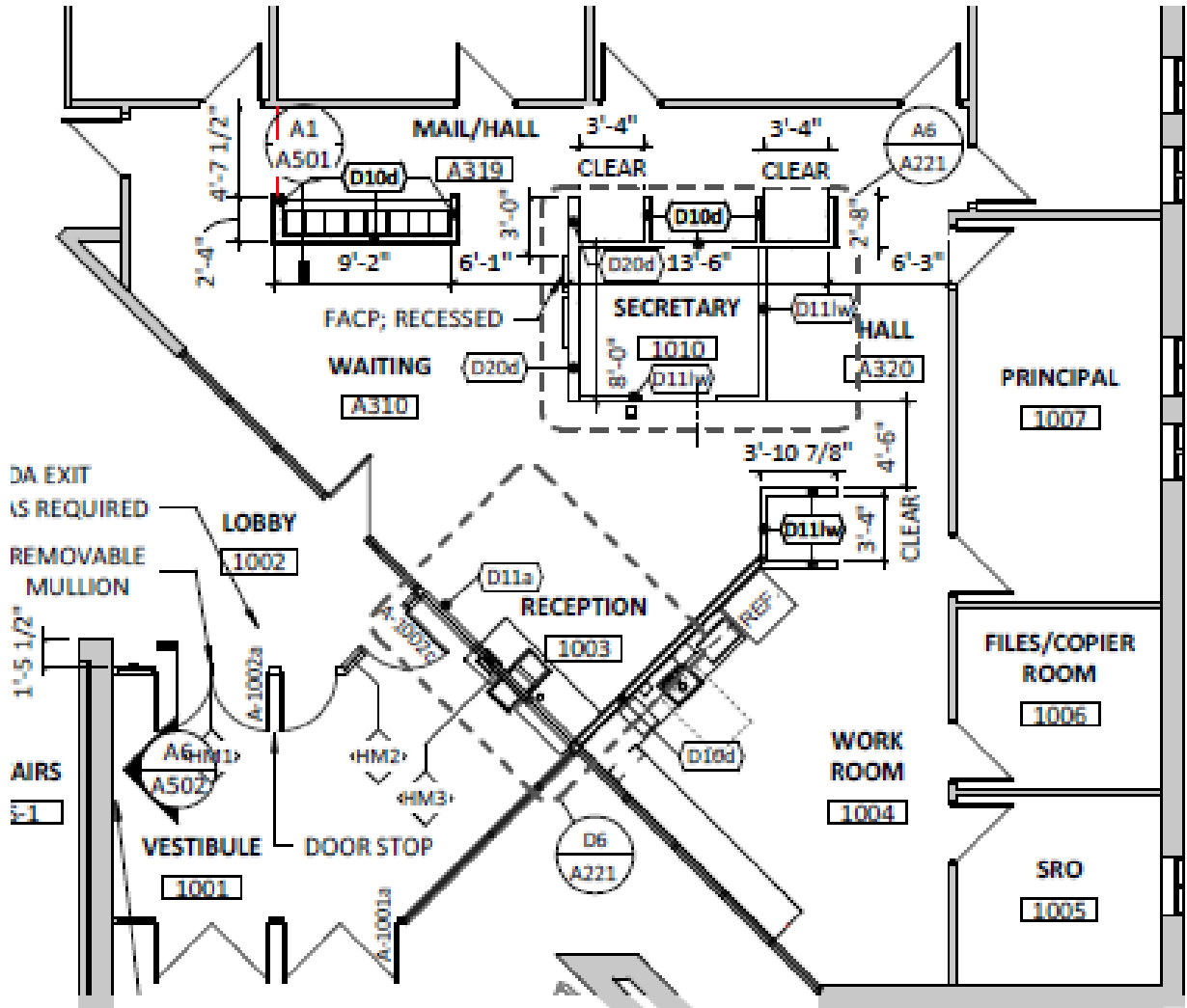
Deer Creek MS
Efficiency Future Ready
RB+B – GTC



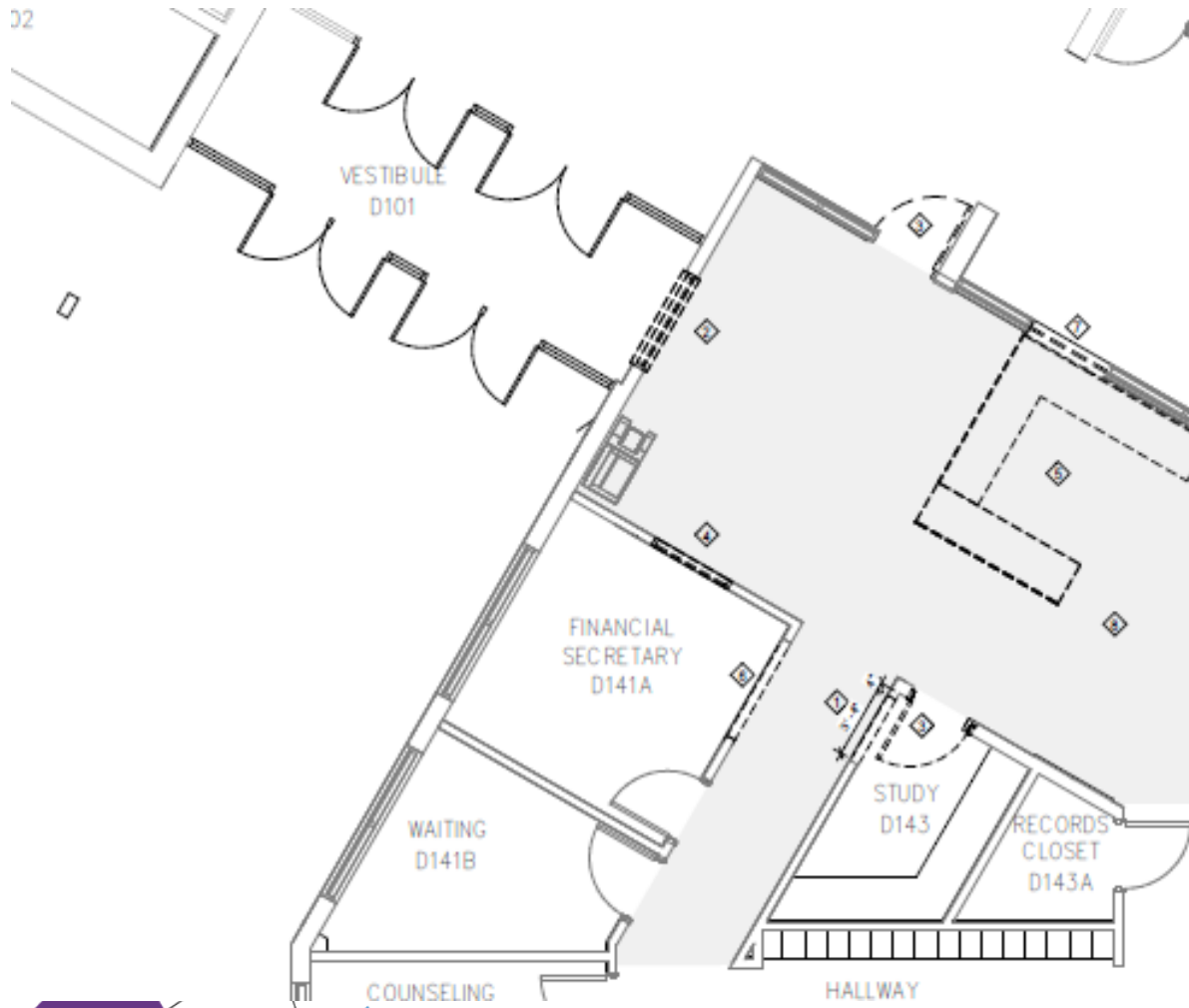
Construction
Bid 12/6/22
\$521,700
Budget
\$317,276
\$204,424
Over Budget

Mandalay MS
 Efficiency Future Ready
 RB+B – GTC

Construction
 Bid 12/6/22
 \$595,700
 Budget
 \$421,323
 \$174,377
 Over Budget



Dunstan MS – Efficiency Future Ready HCM – Single Track



Construction

Bid 12/8/22
\$896,946

Budget
\$411,740

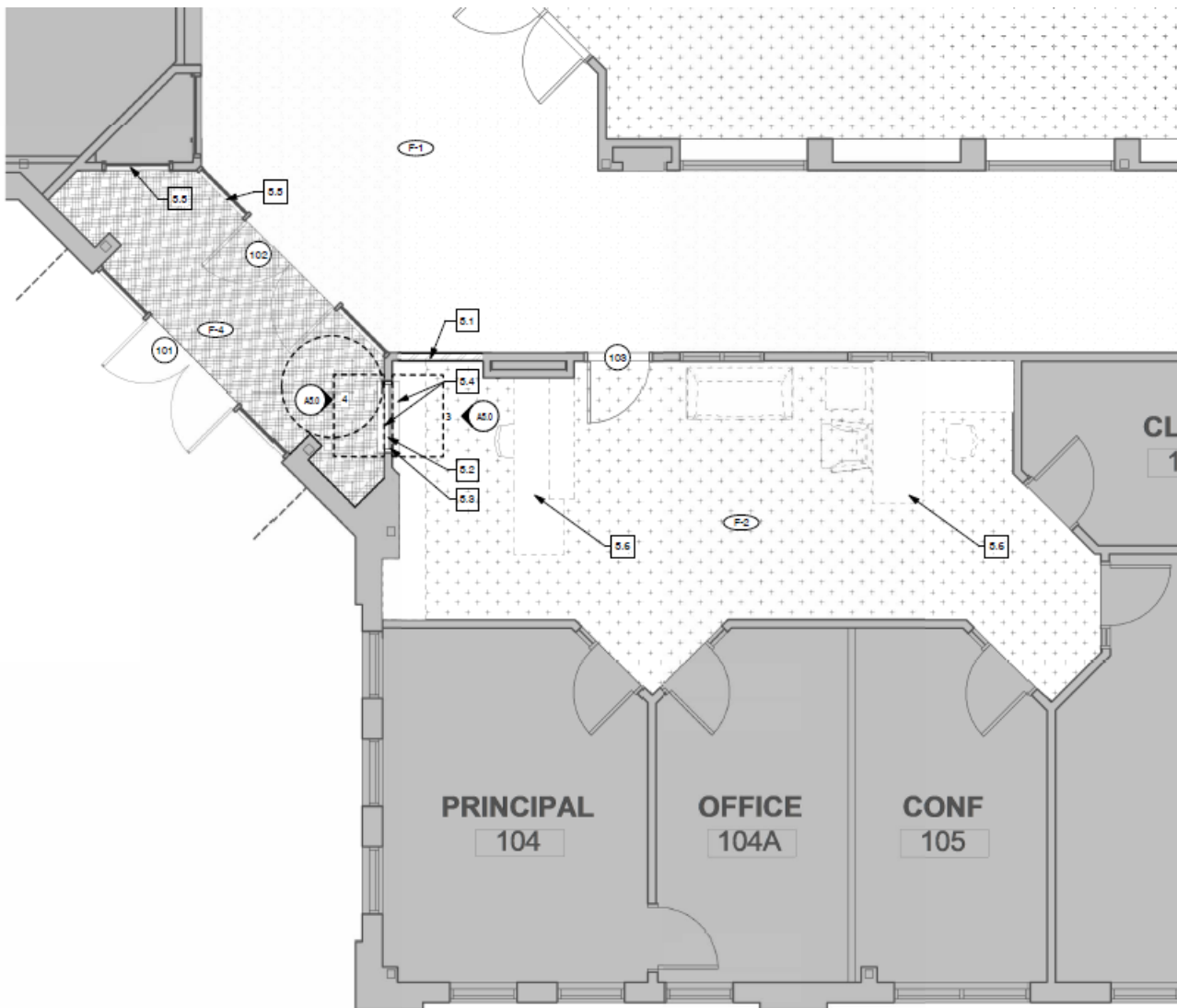
\$485,206
Over Budget

\$266,946 Alt.1
LED CR Lighting 2nd floor
Classrooms



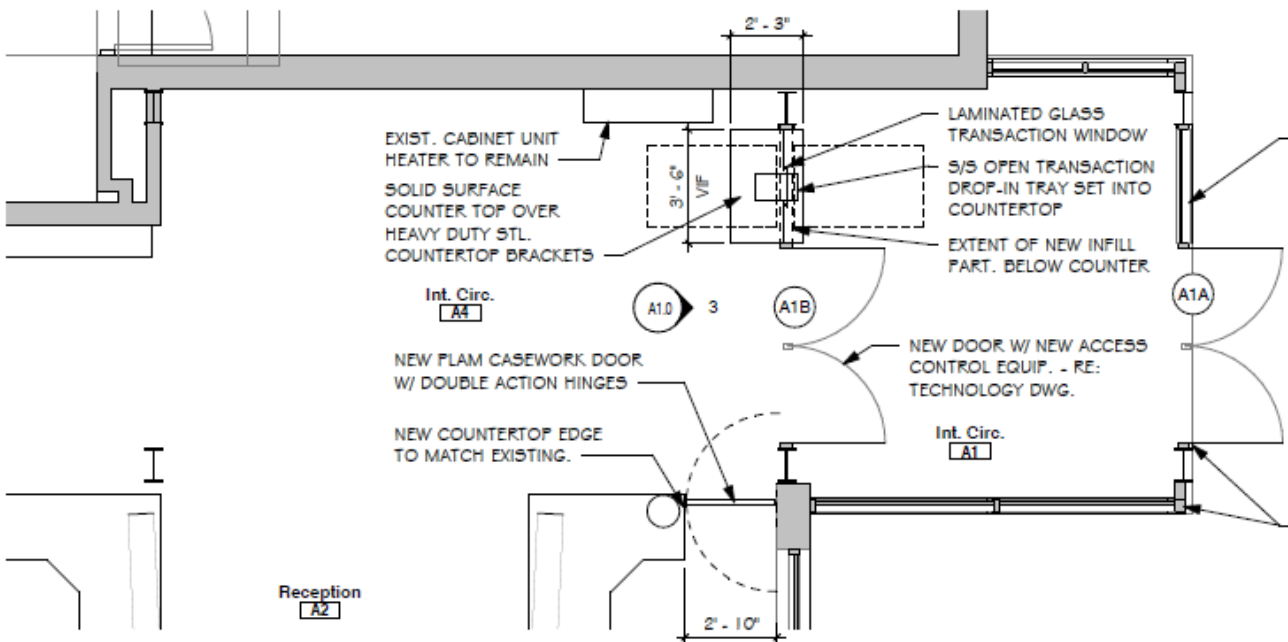
Sobesky Academy – Efficiency Future Ready Eidos – Singletrack

Construction
Bid 12/14/22
\$556,500
Budget
\$401,823
\$154,677
Over Budget



Pennington ES – Efficiency Future Ready Eidos – Single Track

Construction
 Bid 12/14/22
 \$774,500
 Budget
 \$442,605
 \$331,895
 Over Budget
 \$126,000 Alt.1
 Food Service
 (High – Secure Entry,
 LED, MECH Scope)



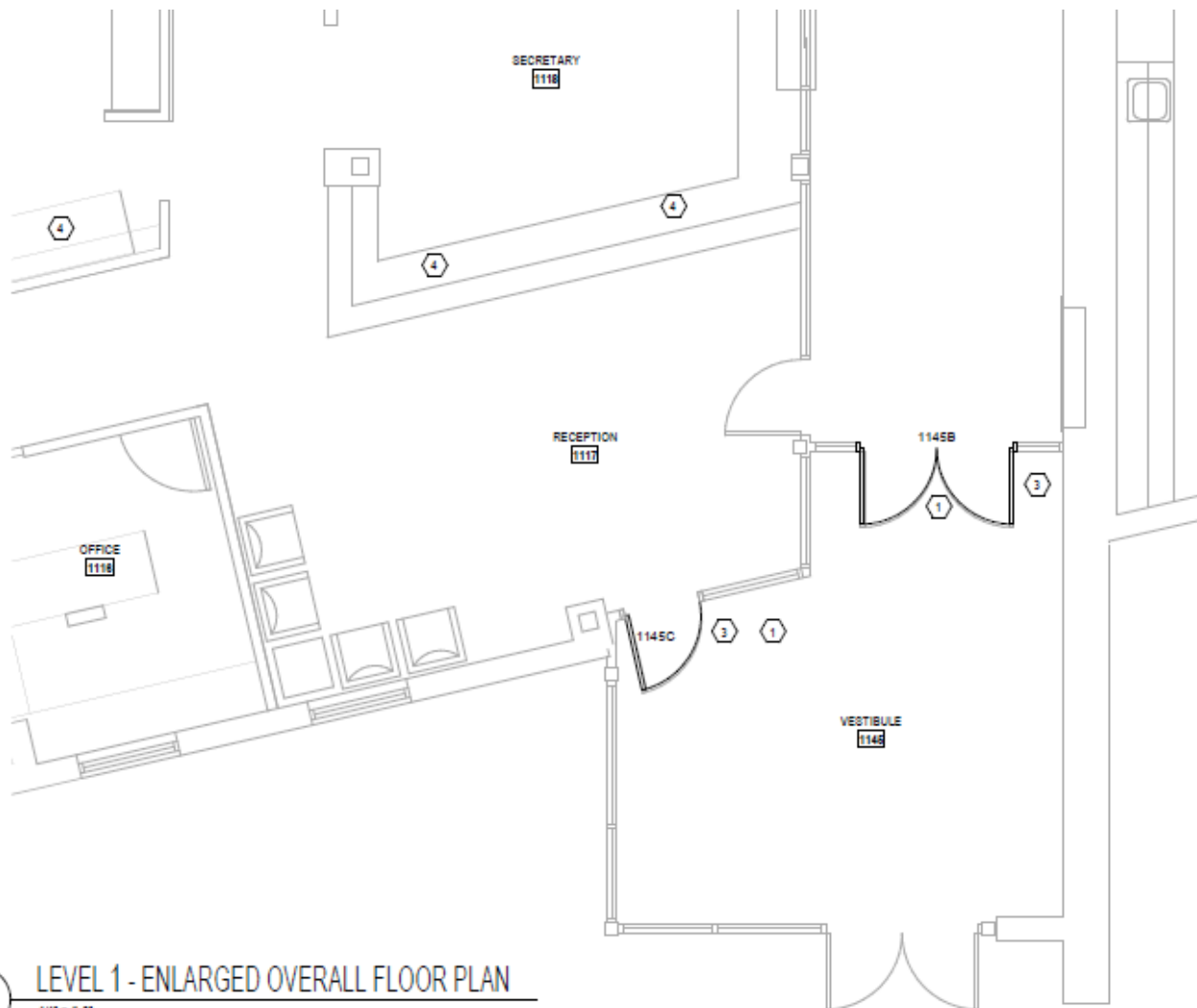
2. Enlarged Entry Plan

1/4" = 1'-0"



Bear Creek K8 – Efficiency Future Ready MOA – Flintco

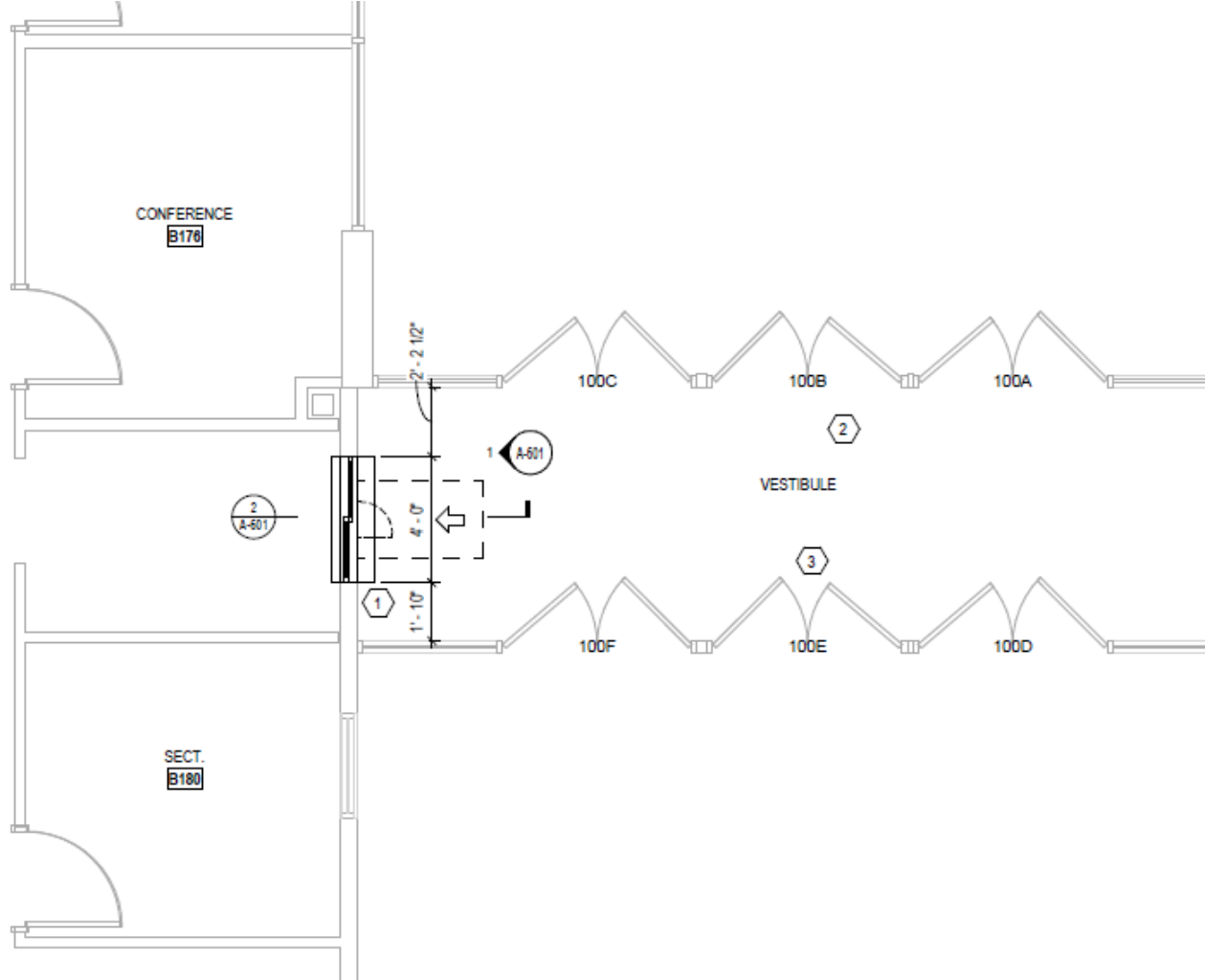
Construction
Bid 1/13/23
\$532,112
Budget
\$313,477
\$218,635
Over Budget



5 LEVEL 1 - ENLARGED OVERALL FLOOR PLAN
1/4" = 1'-0"



Falcon Bluffs MS – Efficiency Future Ready MOA – Flintco



Construction

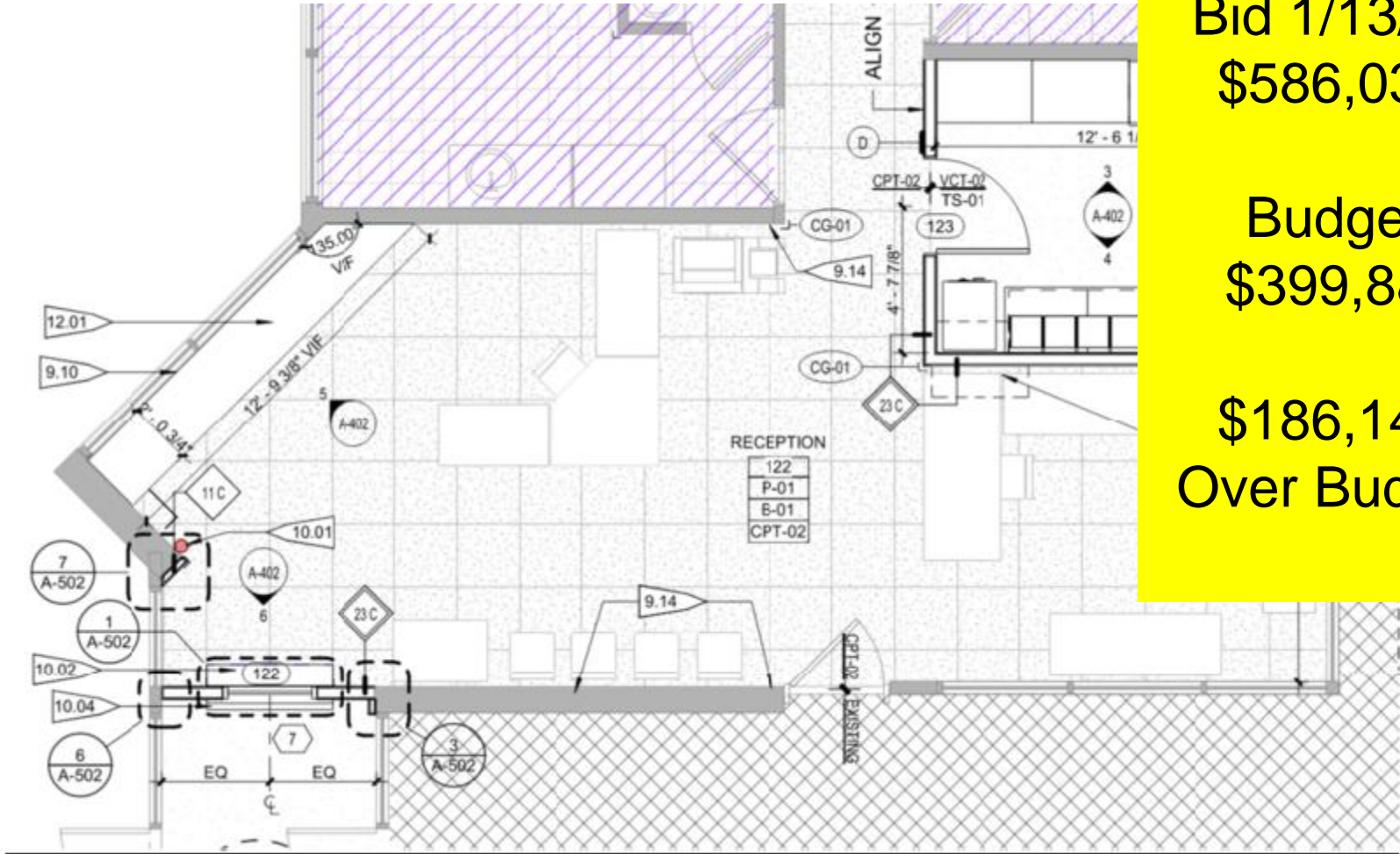
Bid 1/13/23
\$937,343

Budget
\$809,003

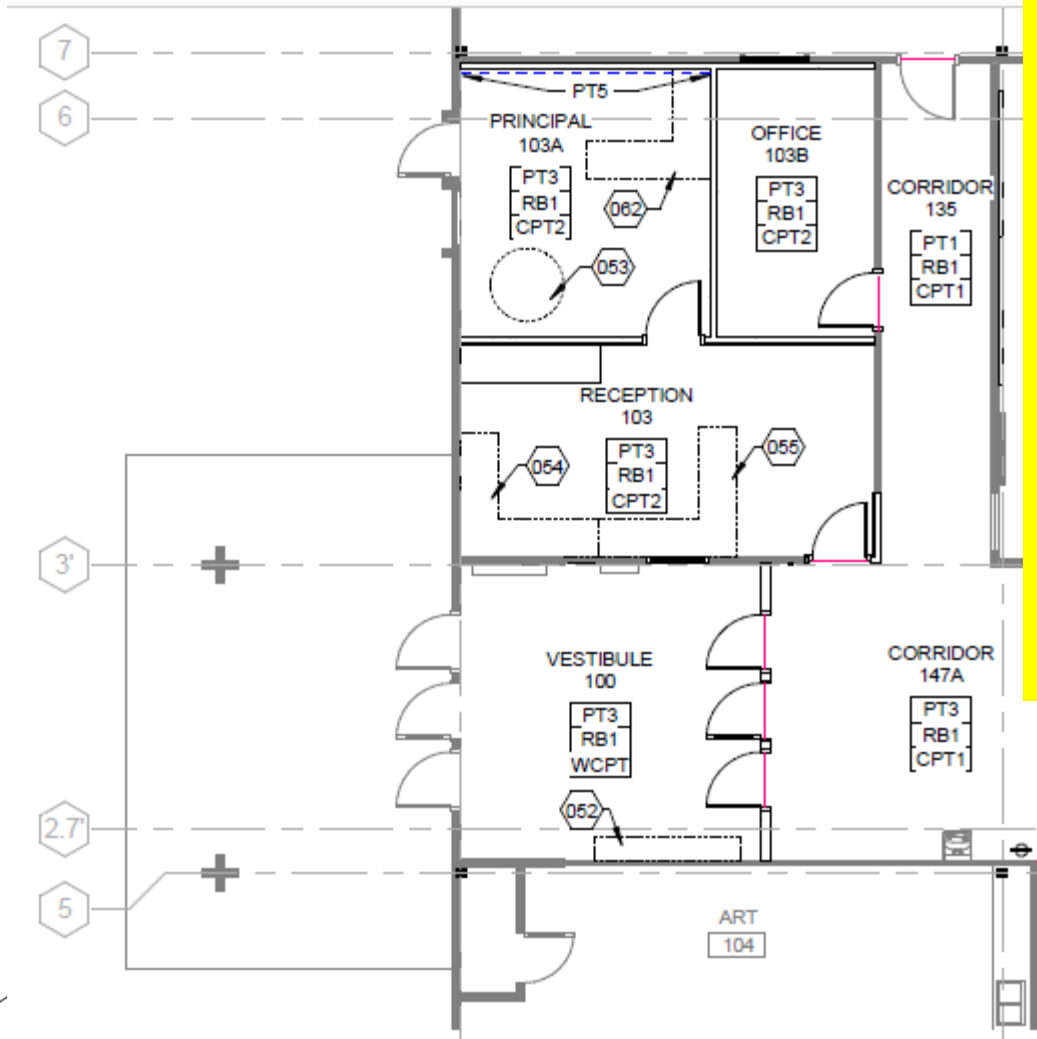
\$128,340
Over Budget

Governors Ranch – Efficiency Future Ready MOA – Flintco

Construction
Bid 1/13/23
\$586,031
Budget
\$399,889
\$186,142
Over Budget



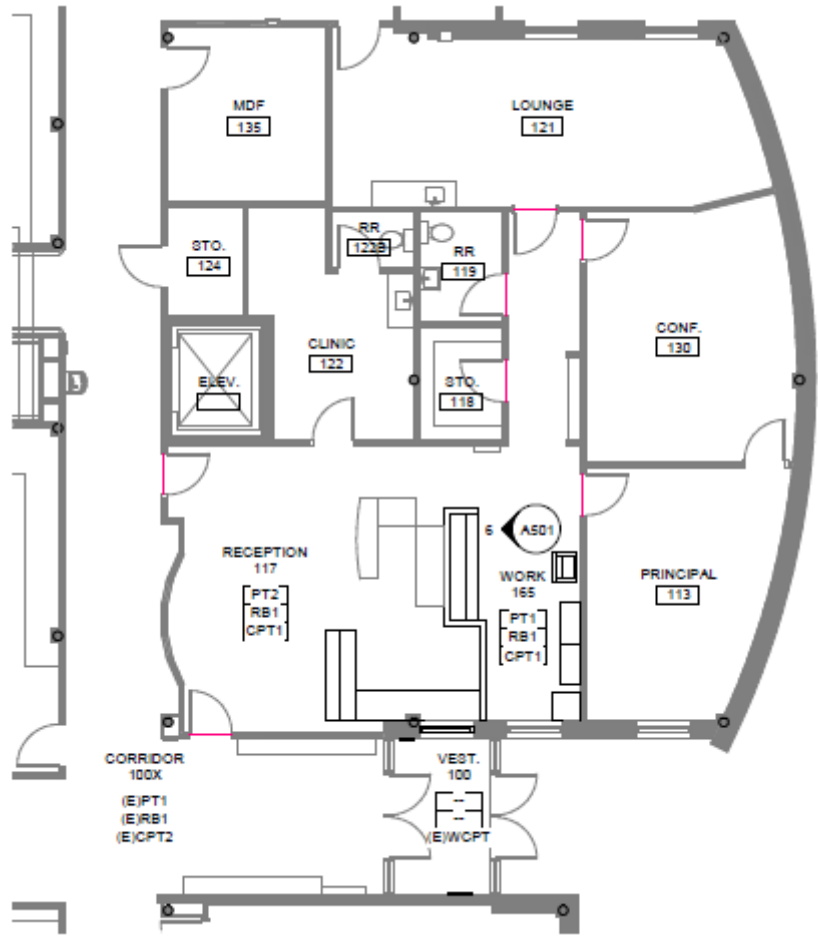
Little ES – Efficiency Future Ready Treanor HL – ADMiller



Construction
Bid 1/18/23
\$715,974
Budget
\$338,098
\$377,976
Over Budget



S Lakewood ES – Efficiency Future Ready Treasor HL – ADMiller



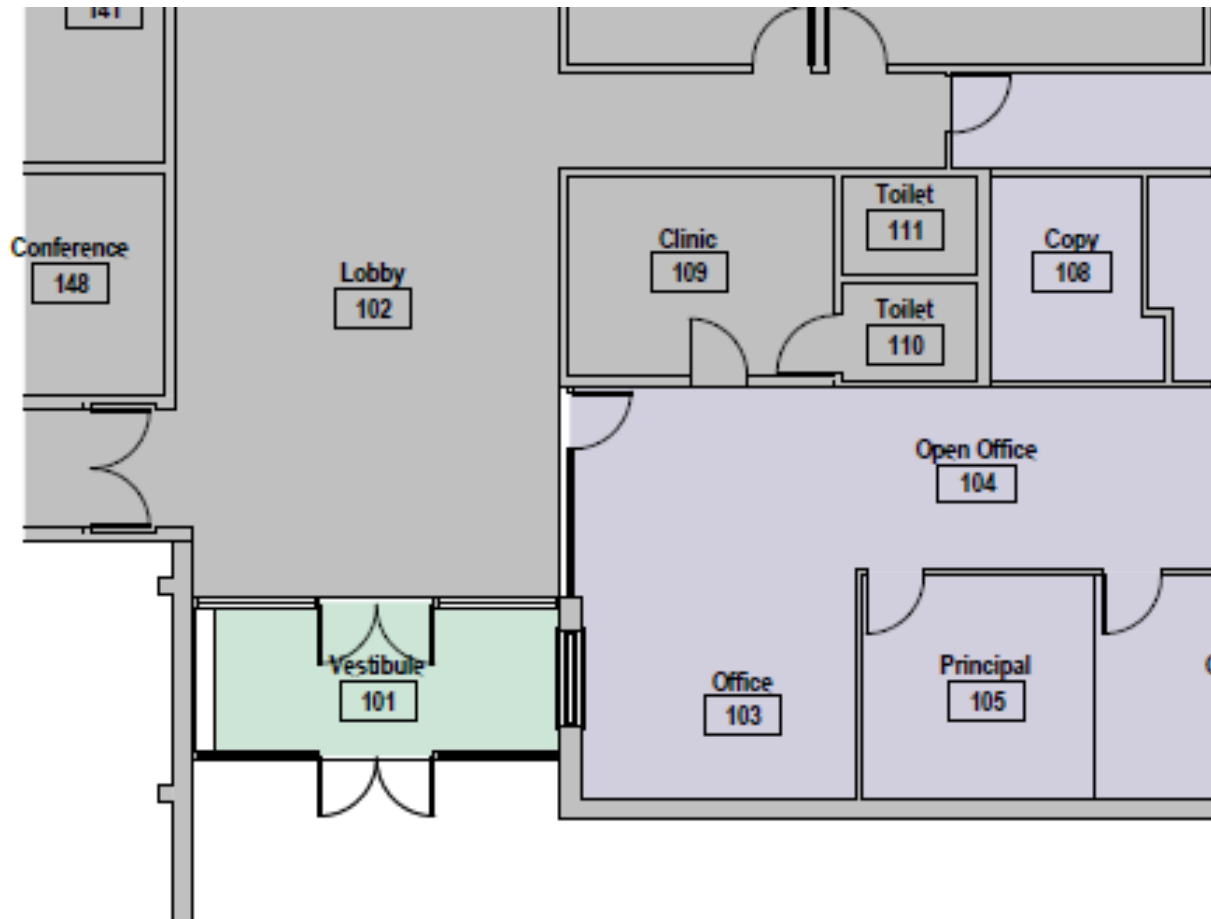
Construction

Bid 1/18/23
\$464,010

Budget
\$328,778

\$135,232
Over Budget

Van Arsdale ES – Efficiency Future Ready H+M – O-A-K



Construction

**Bid 1/31/23
\$1,028,750**

**Budget
\$764,559**

**\$264,191
Over Budget**

**Includes \$535,750 Alt. 1
Roofing**

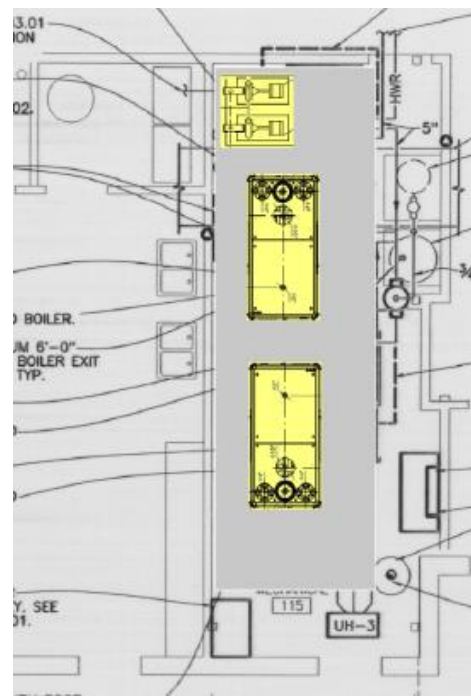
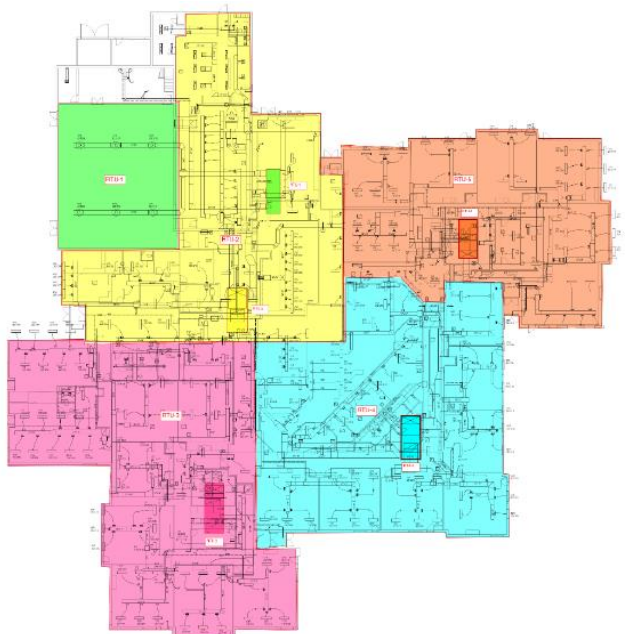
DW Mechanical 2023

Bradford South (RTU's, Controls),

Sobesky (Boilers, Pumps, Controls)

*West Woods ES scope & funding moved back to E&FFR summer 2024

Columbine – CMGC Himmelman



Construction

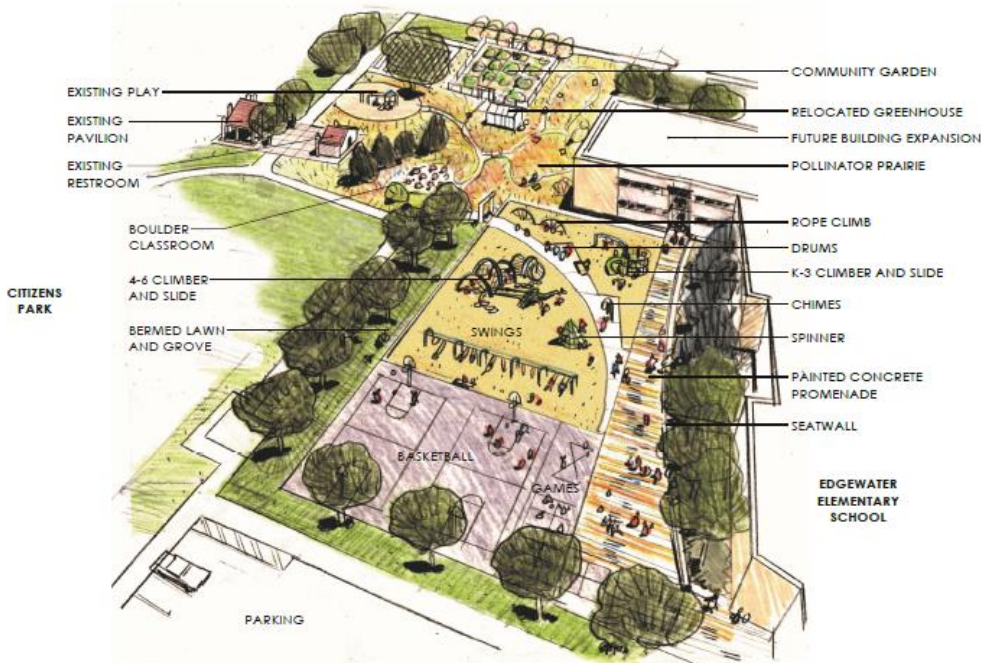
GMP
\$2,445,091

Budget
\$1,790,538

\$654,553
Over Budget

DW Playground 2023 Edgewater ES, Hutchinson ES

Design Concepts – TBD



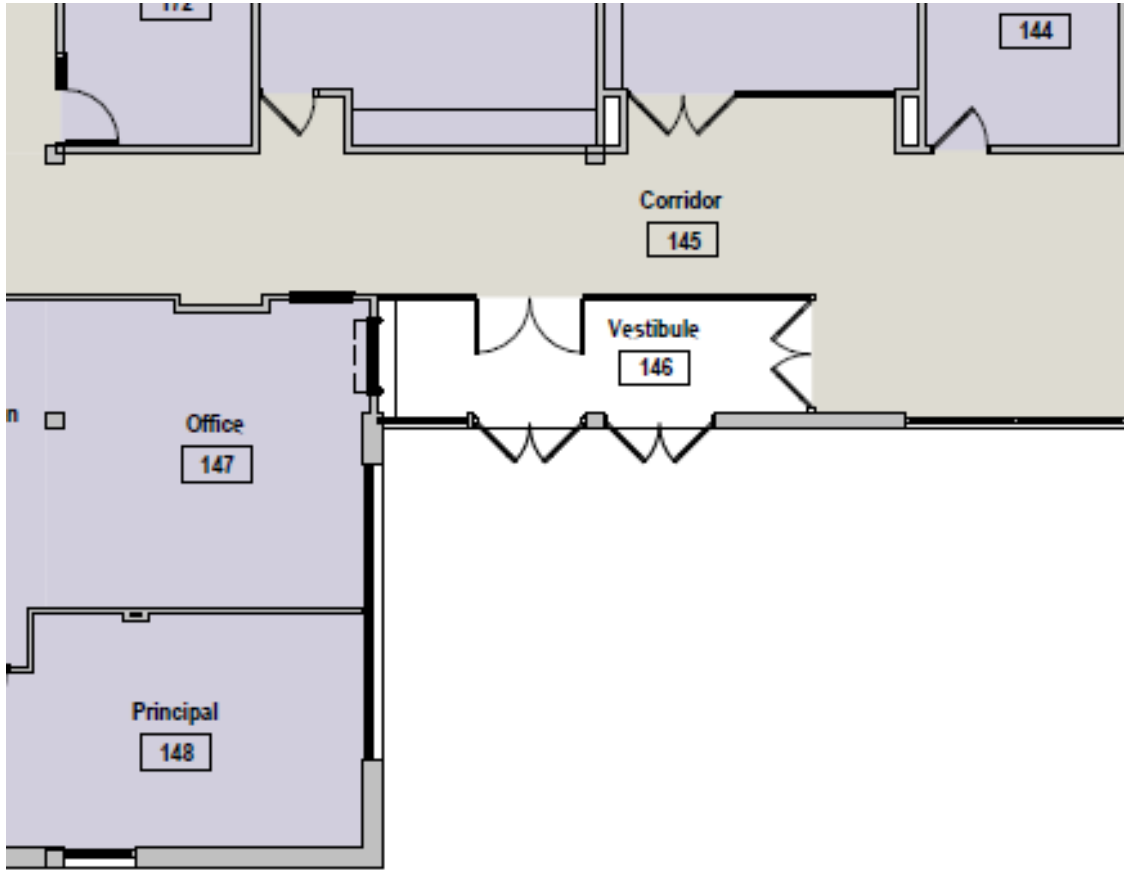
Construction

Bid 2/14/23
\$152,999

Budget
\$150,000

\$2,999
Over Budget

Swanson ES – Efficiency Future Ready H+M – O-A-K



Bid 2/15/23
\$2,193,000

Budget
\$1,715,762

\$477,238
Over Budget

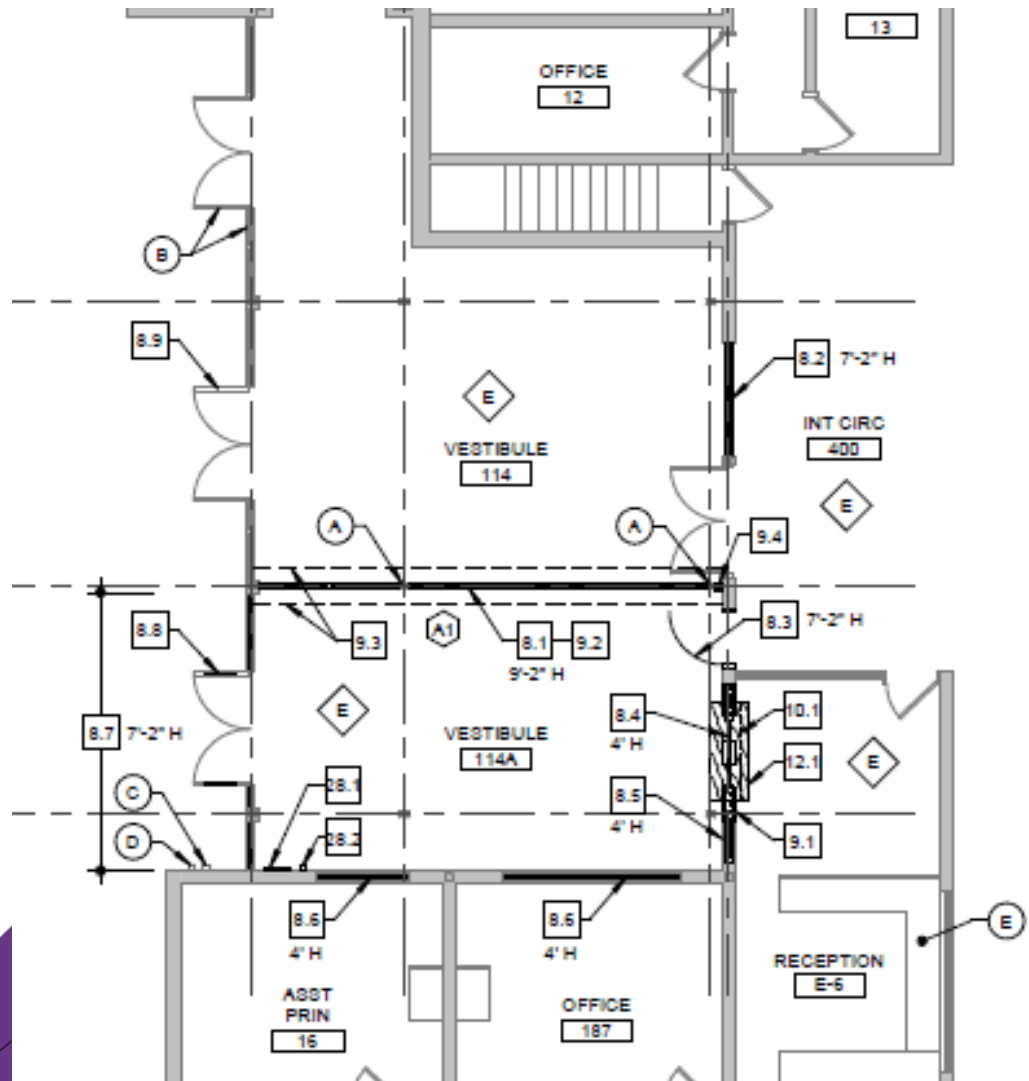
(High – LED, MECH,
Cabinetry Scope)

3/9/23 BOE Agenda



Oberon MS – Efficiency Future Ready Larson Incitti – TBD

Bids 2/23/23



3/9/23 BOE Agenda

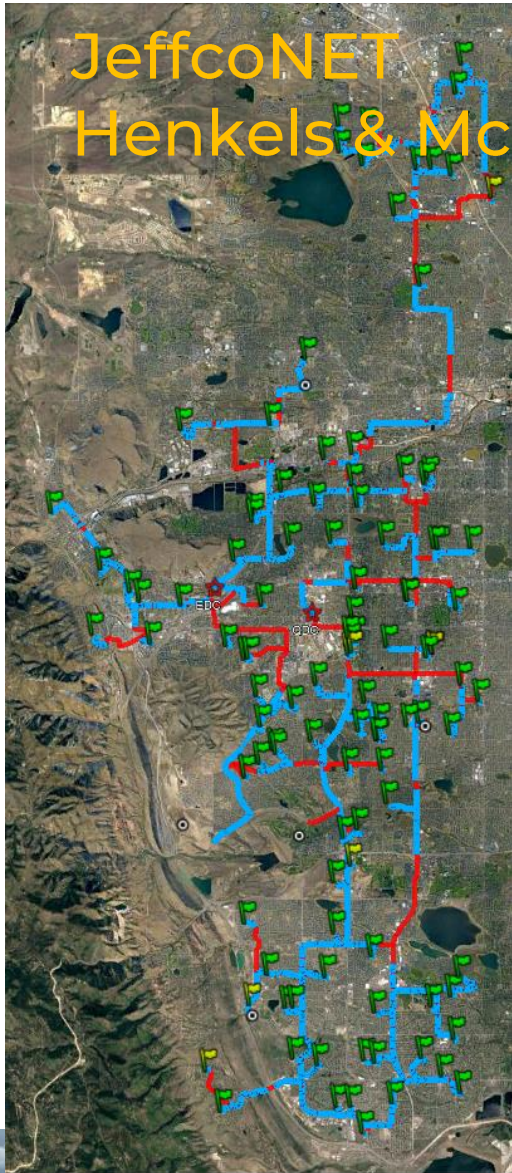


Connections – Efficiency Future Ready Studiotrope – TBD

CD



JeffcoNET Henkels & McCoy



Project Information

Project Start
April 29, 2020

Total Miles of conduit
to be bored 114

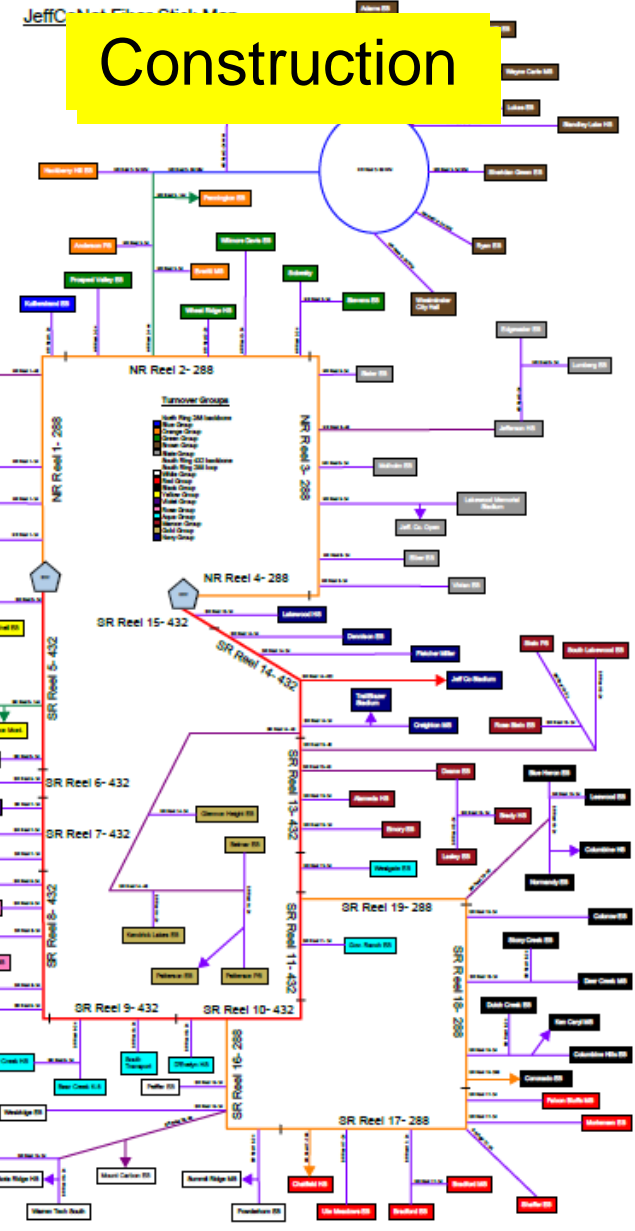
1,082 Permits to date
16 remaining

Miles Conduit installed
103 (90%)

Miles Fiber installed
52 (30%)

North Backbone
Transitioning to
Jeffco Ownership

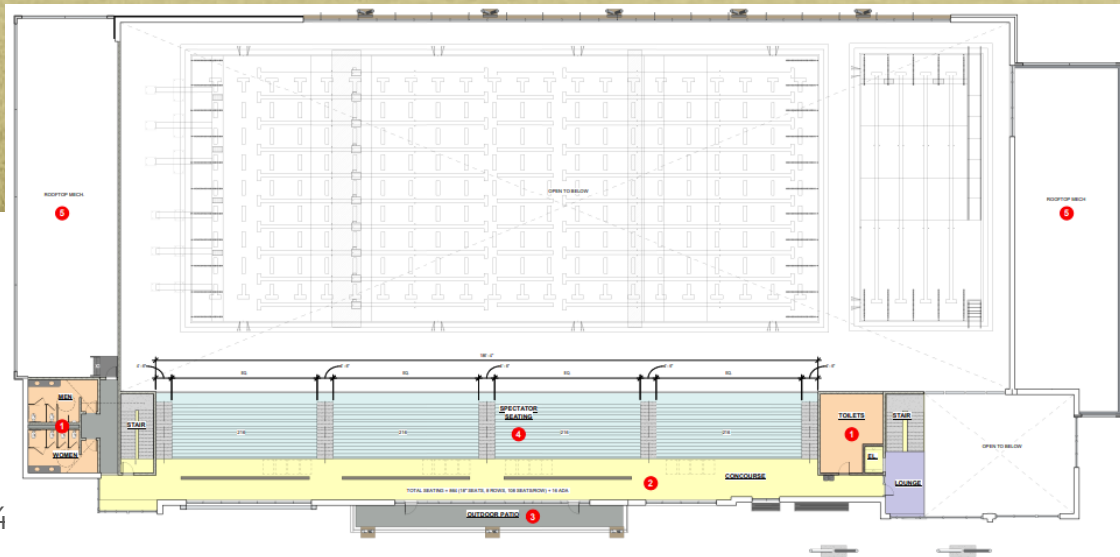
South Backbone turnover
Sept 2023



Meyers Pool

City of Arvada / Jeffco / Apex
OLC Designs – Saunders CMGC

GMP



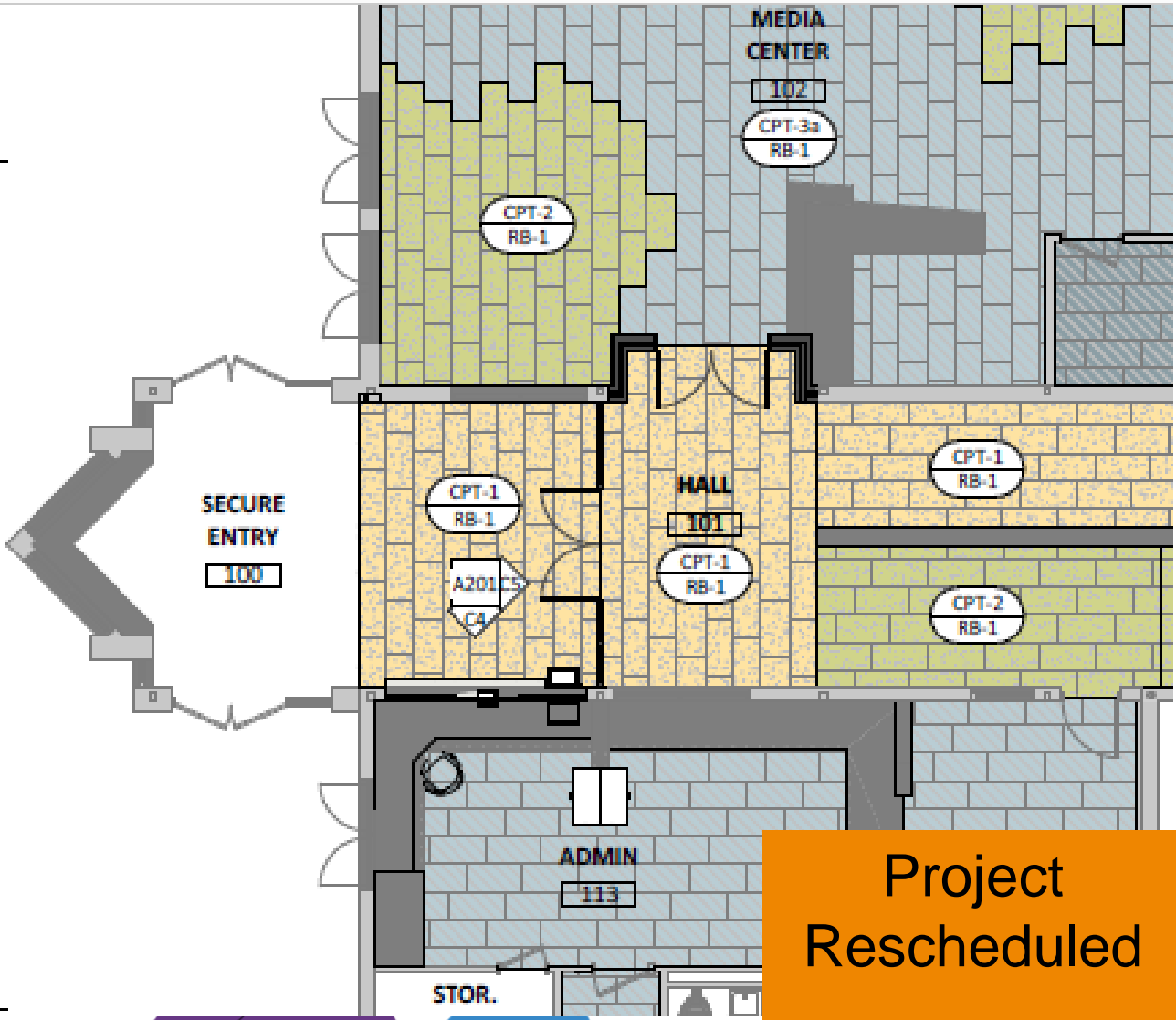
2024 Efficiency Future Ready Projects

Location	Description	Construction Budget
West Lakewood	New School Morrison	\$ 22,402,800.00
Leyden Rock	New School Golden	\$ 21,336,000.00
Fairmount	Efficiency & Future Ready (Roofing, Flooring, Playground Complete) (HVAC Design Complete)	\$ 1,292,181.00
McLain High School	Efficiency & Future Ready	\$ 605,816.00
Rooney Ranch	Efficiency & Future Ready (Flooring, LED Complete)	\$ 141,623.00
Bradford North	Efficiency & Future Ready (Flooring , Paving, LED Complete)	\$ 226,594.00
Bradford South	Efficiency & Future Ready (Flooring, HVAC, LED Complete)	\$ 169,351.00
Leawood	Efficiency & Future Ready (Led Complete)	\$ 684,210.00
Normandy	Efficiency & Future Ready (Playground LED Complete)	\$ 1,044,213.00
Coal Creek K8	Efficiency & Future Ready	\$ 788,966.00
Moore MS	Late Summer Bid Efficiency & Future Ready	\$ 925,804.00
Warren Tech Central	Efficiency & Future Ready -	\$ 2,492,054.00
Meiklejohn	Efficiency & Future Ready (LED Complete)	\$ 200,705.00
West Woods	Efficiency & Future Ready (flooring LED Complete) HVAC design 99% complete)	\$ 2,672,666.00
Drake Middle	Efficiency & Future Ready	\$ 658,174.00
Free Horizon	Efficiency & Future Ready (Secure Entry Remains)	\$ 175,000.00

Plus FF&E Projects



Coal Creek K8 – Efficiency Future Ready RB+B – Himmelman



Bid 1/20/23
\$1,229,704

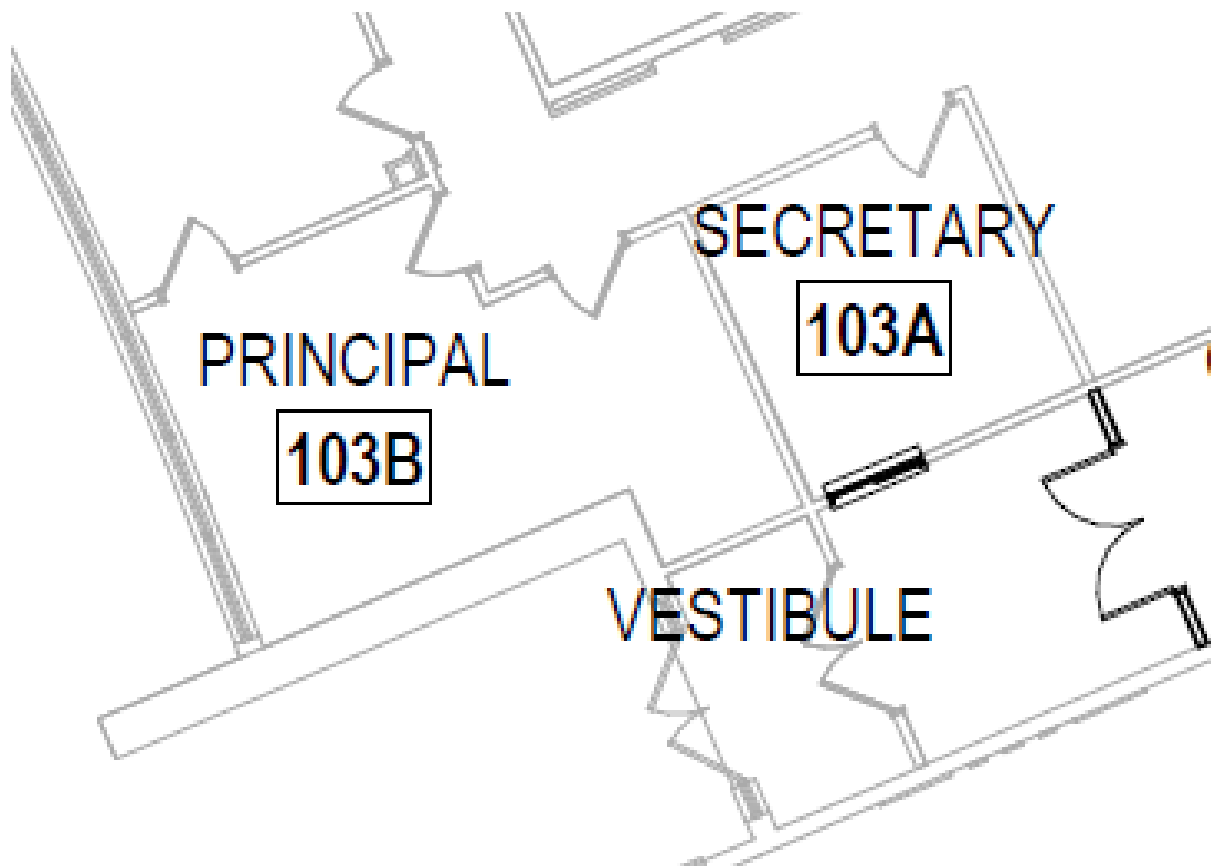
Budget
\$788,966

\$440,738
Over Budget

Project
Rescheduled
Re-Bid TBD



Drake MS – Efficiency Future Ready MOA – Himmelman



Bid 2/9/23
\$1,374,400

Budget
\$658,174

\$716,226
Over Budget

Project
Rescheduled

Re-Bid TBD



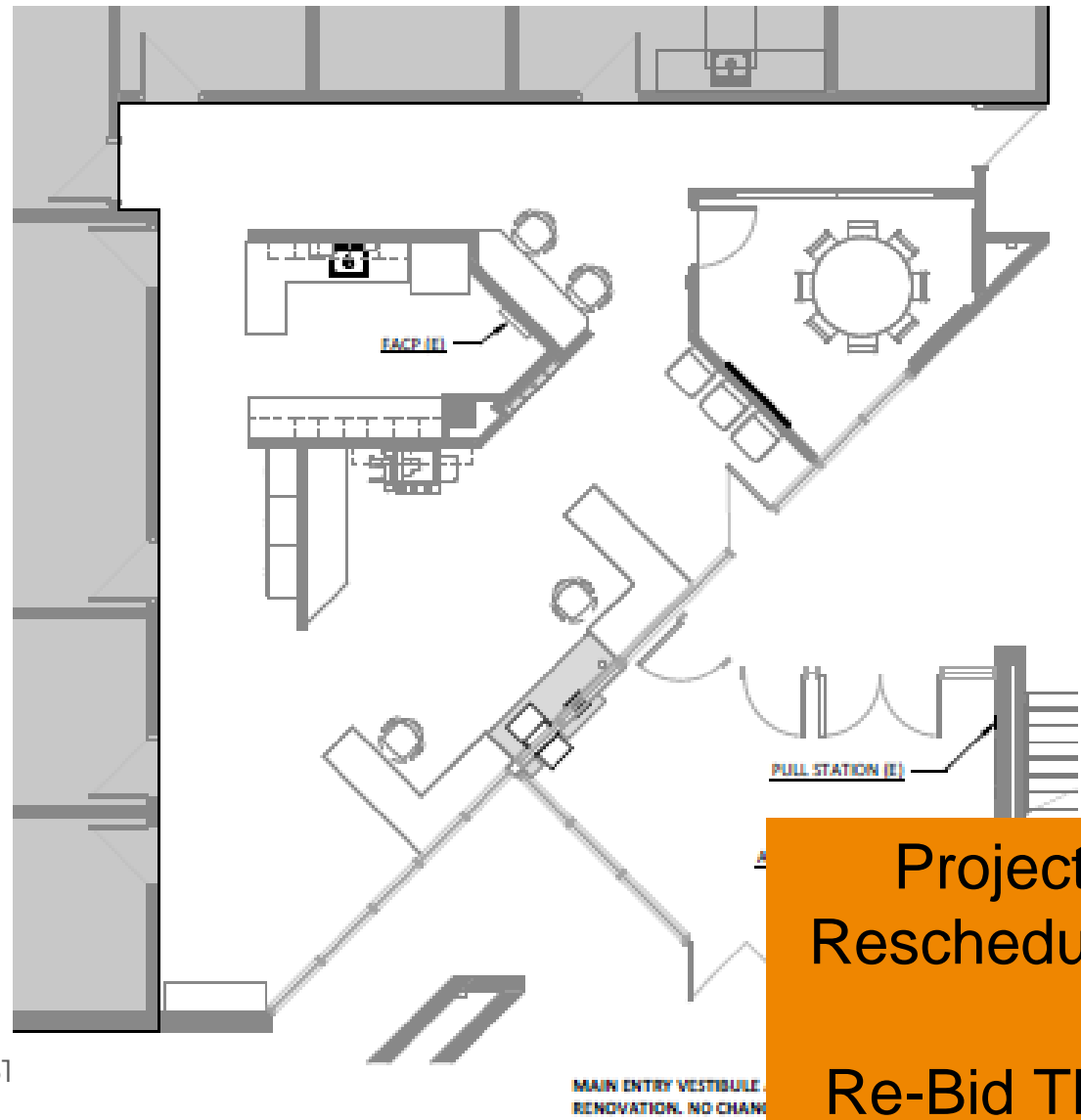
Moore MS, Efficiency Future Ready RB+B – GTC

Bid 12/6/22
\$1,272,200

Budget
\$925,804

\$346,396
Over Budget

\$279,500 Gym flooring
Alt.3



Project
Rescheduled
Re-Bid TBD



Warren Tech – Efficiency Future Ready HCM – PG Arnold

Bid 12/8/22
\$2,333,000

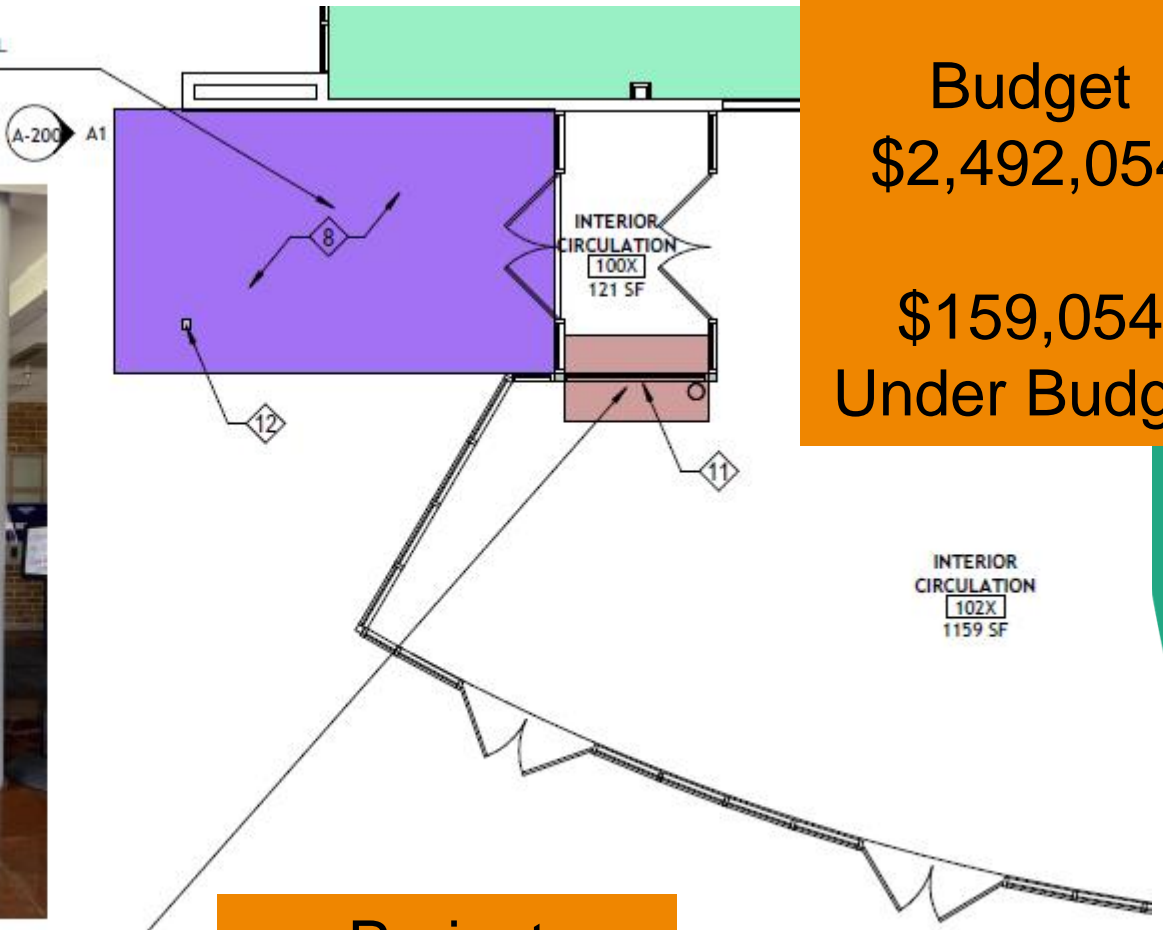
Budget
\$2,492,054

\$159,054
Under Budget

MODIFY EXISTING CANOPY TO PROVIDE RECTANGULAR SHAPED CANOPY. ADD NEW STEEL COLUMN AT NEW CORNER OF CANOPY.



MODIFY EXISTING STOREFRONT AT INTERIOR VESTIBULE TO INSTALL NEW SECURITY TRANSACTION WINDOW



Project
Rescheduled
Re-Bid TBD



2023 Miscellaneous Projects

DW FA Upgrades – D'Evelyn & Pomona TLH Fire – Weifield Group



Bid 12/13/22
\$1,178,353

Estimate
\$1,721,000

Below
Estimate
\$542,647

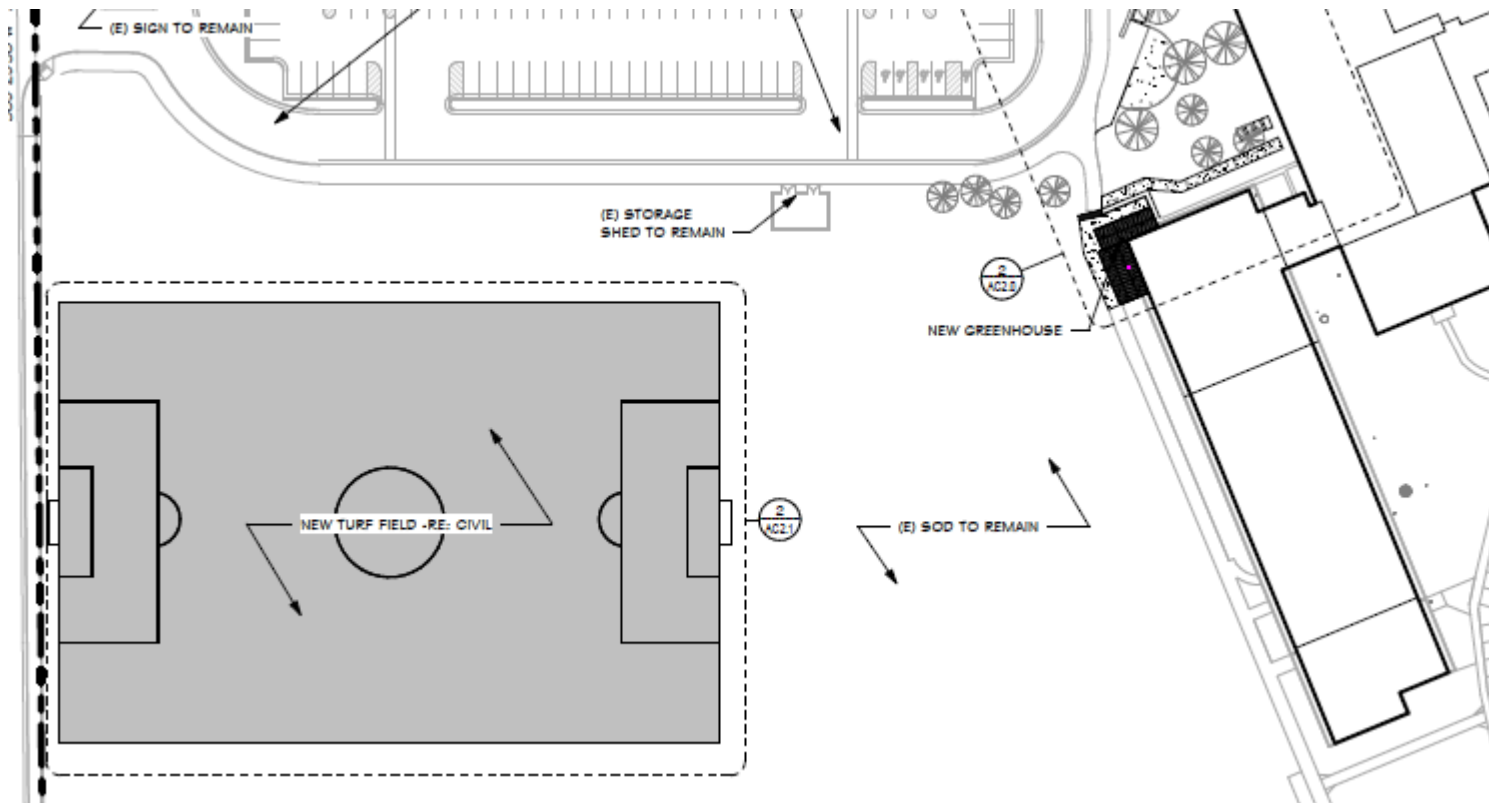
Project
Cancelled

Re-Bid TBD



Turf Field Replacement Wheat Ridge HS Eidos – GTC

Construction



DW Mechanical 2023 South Lakewood (1 RTU)

Columbine – CMGC Himmelman

GMP 2/16

Estimate
\$800,000



Ackerman – GC TBD

- Replace Direct Burial electrical lines at the 6th & Kipling Stadium Lighting
- Replace the existing Mercury Vapor lights at Trailblazer Stadium with LED
- Replace parking lot lighting with LED and add exterior security cameras at the Ed Center



DW Carbon Monoxide Notification

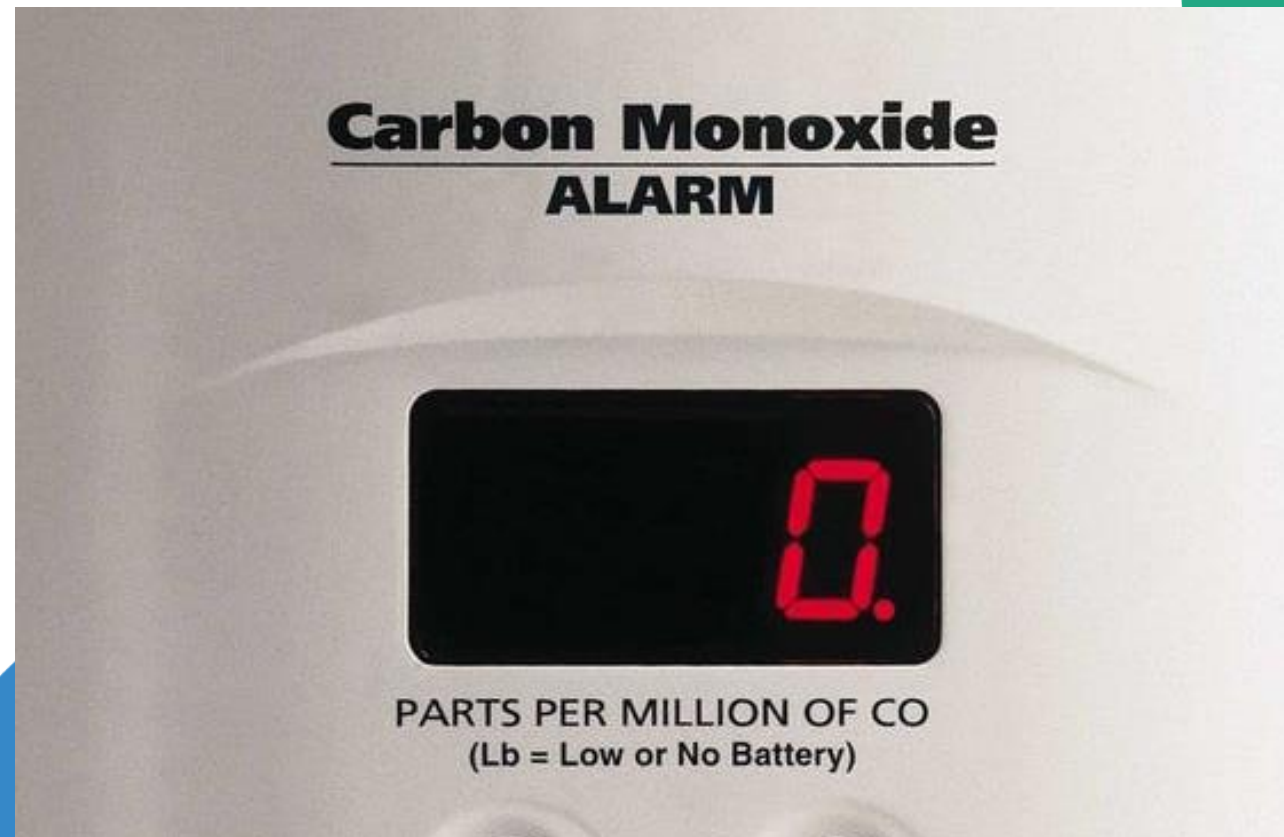
SD

7 Schools – Required by South Metro Fire District

Coronado, Blue Heron, Leawood, Normandy,
Dutch Creek, Stony Creek, Columbine Hills



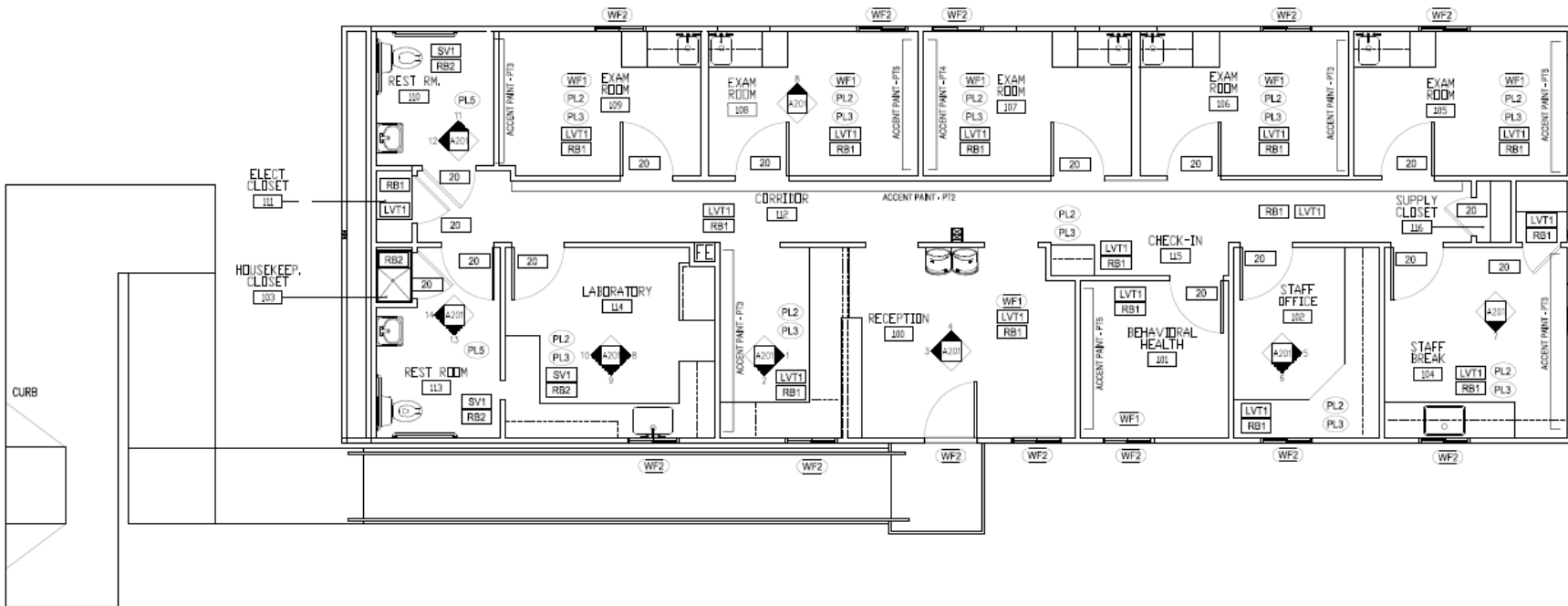
TLH Fire – TBD



Stride Clinic @ Alameda International Jr/Sr High

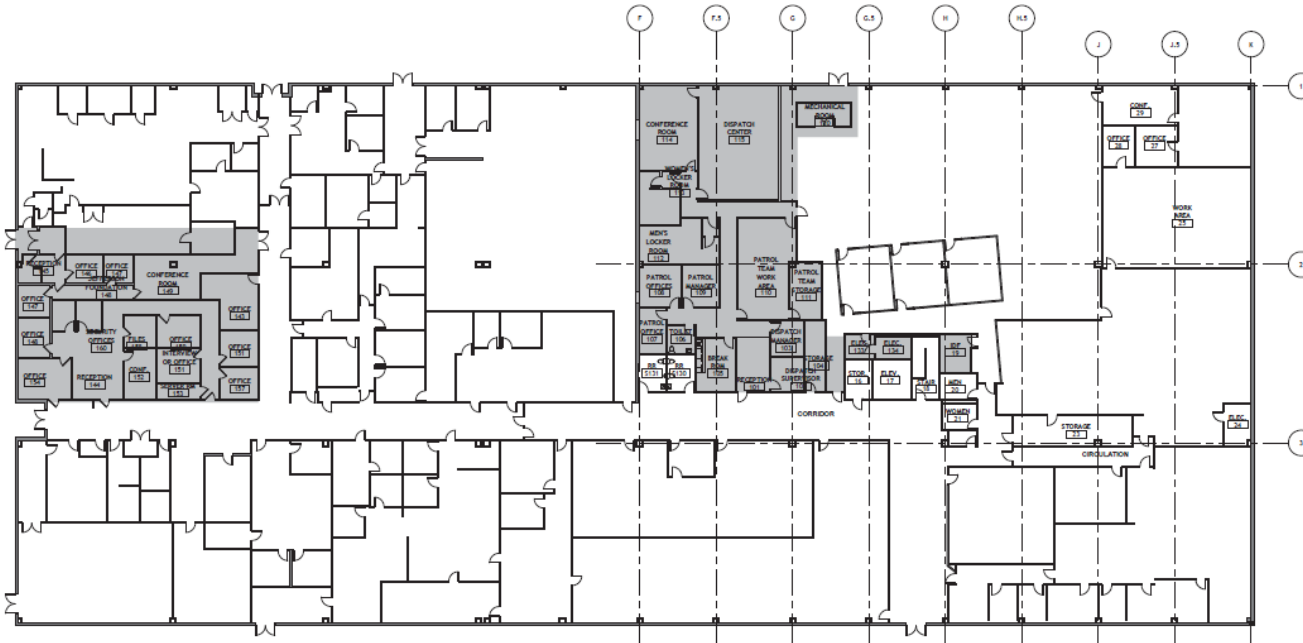
Jordin – TBD

CD



Security Office Renovation 809 Quail – Building 1

HCM – CMGC WE O’Neal



DD

CMGC RFP
WE O’neal,
Mccauley,
Fransen
Pittman,
Crossland

WW Wheeler – GC TBD



2023 Policy Projects

Capital Investments for Thriving Schools - BOE Jun 08, 2022

Healthy & Equitable Start Times - BOE Mar 03, 2022

Regional Opportunities for Thriving Schools – BOE Nov 10, 2022

Program Verification & Feasibility Study – DLR Group

Fletcher Miller Special School

Study Complete
11/11/22

BOE Jun 08, 2022 - Special Meeting-Study/Dialogue Session
Capital Investments for Thriving Schools

Programming

Building Program Summary

Test fits will be based upon a 77,014 GSF program composed of small learning communities (suites of spaces including classrooms and other flexible learning spaces) for each cohort. This space program is based upon an enrollment of 100 students, with capacity to flex up to 115, if future staffing supports an increased enrollment. The spaces outlined for the future Fletcher Miller School are sized to accommodate adequate space for collaborative learning, specialized instruction, family and community connections, and specialized storage requirements. Additionally, to support the mobility requirements of this campus, spaces and grossing factors have been sized to either meet or exceed federally mandated American with Disabilities Act (ADA) required clearances.

Throughout each of the DAG meetings, the importance of indoor play space was discussed. These areas may be built into the presented program in a number of ways including within the dining/collaboration spaces within each of the learning communities. Therefore, it has not been included as additional square footage within the program.

PROGRAMMING



PROGRAM SUMMARY

Admin Area:	3,960 SF
Pre-K Learning:	4,925 SF
K-12 Learning:	13,590 SF
Lighthouse Learning:	5,070 SF
Jeffco Transition:	3,370 SF
Vocational:	1,600 SF
Library/Media:	3,300 SF
Food Service:	1,260 SF
Art/Music/P.E:	7,855 SF
Clinic:	1,190 SF
Therapeutic:	5,930 SF
Bldg. Support:	2,960 SF
TOTAL BUILDING AREA	77,014 SF

Reduced to
66,244
Square Feet

Healthy & Equitable Start Times

Start Times Next Steps

BOE Mar 03 2022

High School Athletic Field Lighting

Phase I - Fall 2023 (with NTP 2/9)

Engineer Ackerman – CMGC Himmelman

Address challenges related to athletics and activities.

IGMP 2/1/23
\$6,556,613

CMGC RFP
Fransen Pittman,
Himmelman,
eci, Saunders,
~~Bryan, Turner~~



Alameda International High School
Arvada High School
Arvada West High School
Bear Creek High School
Chatfield High School
Columbine High School
Dakota Ridge Senior High School
D'Evelyn Junior/Senior High School
Golden High School
Green Mountain High School
Jefferson High School
Lakewood High School
Pomona High School
Ralston Valley Senior High School
Standley Lake High School
Wheat Ridge High School

School Closings & Consolidations

Resolution: Board of Education Decision on Staff
Recommendation Regional Opportunities for Thriving Schools
Thursday, November 10, 2022

GMP
\$6,886,094

Start 11/10/22

Prospect Valley ES (8CR Addition) MOA & Phipps CMGC

GH Phipps to remain the contractor for the new scope.

37 Week Design & Construction
Schedule



Effective July 1, 2023,
Kullerstrand Elementary
School will close and
combine its existing
attendance area with that
of Prospect Valley
Elementary School;

School Closings & Consolidations

Resolution: Board of Education Decision on Staff
Recommendation Regional Opportunities for Thriving Schools
Thursday, November 10, 2022

37 Week Design & Construction Schedule

Stober ES (5CR Addition + Kitchen) LOA & CMGC GTC

**IGMP
\$5,422,602**

Start 3/20/23



Effective July 1, 2023, New Classical Academy at Vivian will close and combine its existing attendance area with that of Stober Elementary School;

School Closings & Consolidations

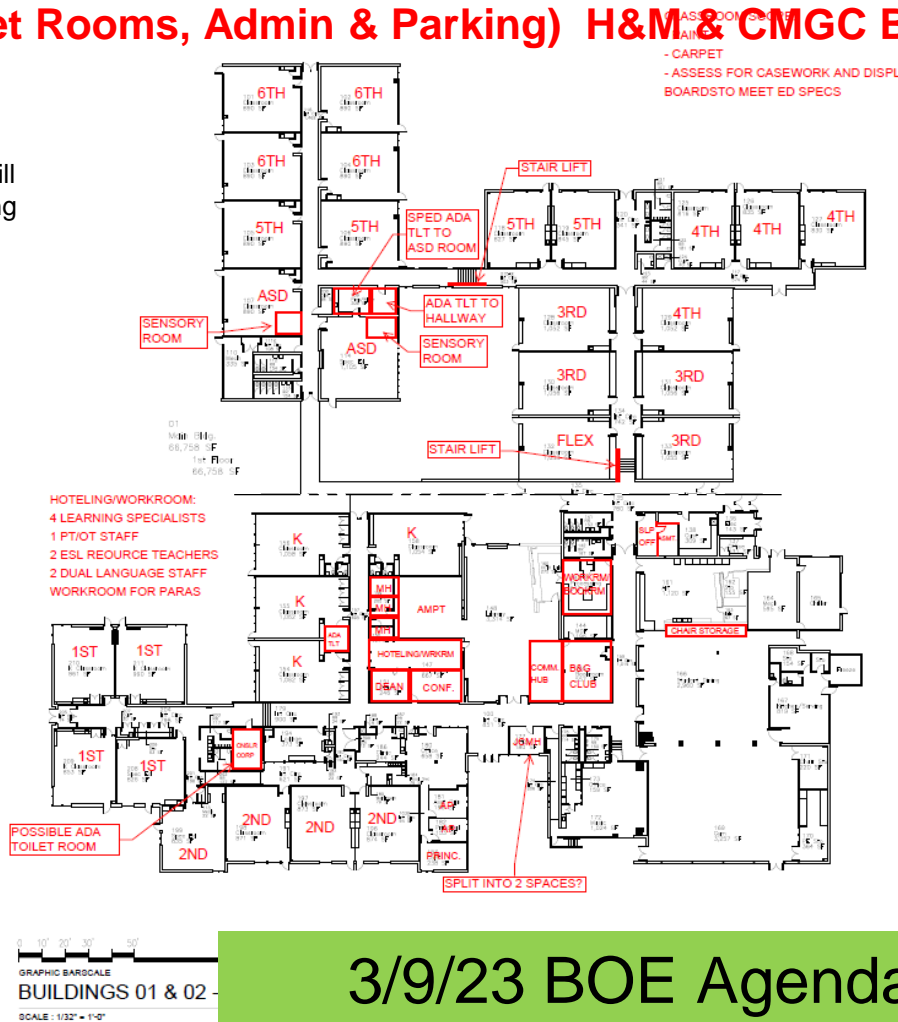
Resolution: Board of Education Decision on Staff
 Recommendation Regional Opportunities for Thriving Schools
 Thursday, November 10, 2022

Lasley ES

9 Week Construction Schedule

(ADA Lifts / Toilet Rooms, Admin & Parking) H&M & CMGC Bryan

A. Effective July 1, 2023, Emory Elementary School will close and combine its existing attendance area with that of Lasley Elementary School;



CD's
 CMGC RFP
 Bryan,
 Crosslands,
 FGI, GTC,
 Himmelman,
 PG Arnold

School Closings & Consolidations

Resolution: Board of Education Decision on Staff
Recommendation Regional Opportunities for Thriving Schools
Thursday, November 10, 2022

9 Week Construction Schedule

**DW – Receiving Schools Upgrades Bundle #1
A/E RB+B – CMGC HPM**

**Foothills, Vanderhoof, Green Gables, Hutchinson, Maple Grove,
Powderhorn, Ryan, Secrest, Semper, Slater, Slater Back on 2/6,
Fremont, Wheat Ridge, Standley Lake, Adams, Meiklejohn**

**CD
CMGC RFP
HPM, Bassett,
Crossland, PG
Arnold,
Saunders,
Haselden, FCI
Palace, GE
Johnson**

Identify preschool options based on an articulated strategy for district-wide preschool as part of students' PK-12 educational experience;



3/9/23 BOE Agenda

School Closings & Consolidations

Resolution: Board of Education Decision on Staff
Recommendation Regional Opportunities for Thriving Schools
Thursday, November 10, 2022

9 Week Construction Schedule

DW – Receiving Schools Upgrades Bundle #2
A/E MOA – CMGC Saunders

Sierra, Weber

CD

CMGC RFP
Select 12/16
~~HPM, Bassett,~~
~~Crossland, PG~~
~~Arnold,~~
Saunders,
~~Haselden, FCI~~
~~, Palace, GE~~
Johnson

Identify preschool options based on an articulated strategy for district-wide preschool as part of students' PK-12 educational experience;



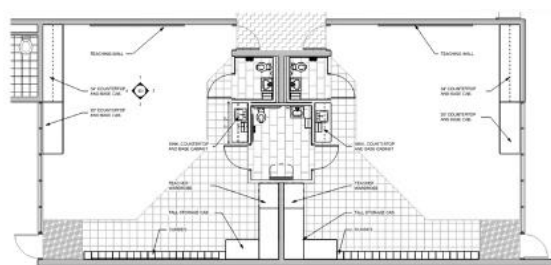
3/9/23 BOE Agenda

School Closings & Consolidations

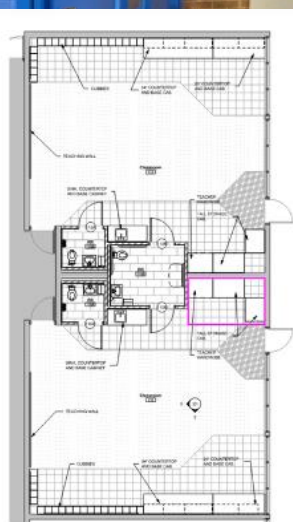
Resolution: Board of Education Decision on Staff Recommendation Regional Opportunities for Thriving Schools
Thursday, November 10, 2022

Campbell (ELC) Eidos & Palace CMGC

9 Week Construction Schedule



Typical Classroom - Area A



Typical Classroom - Area C

CD's
CMGC RFP
Palace,
Crossland,
GH Phipps,
Bryan,
McCauley,
Himmelman,
WE'Oneal

Arvada West:
Campbell =
ECE Center
2023-24*

Identify preschool options based on an articulated strategy for district-wide preschool as part of students' PK-12 educational experience;

School Closings & Consolidations

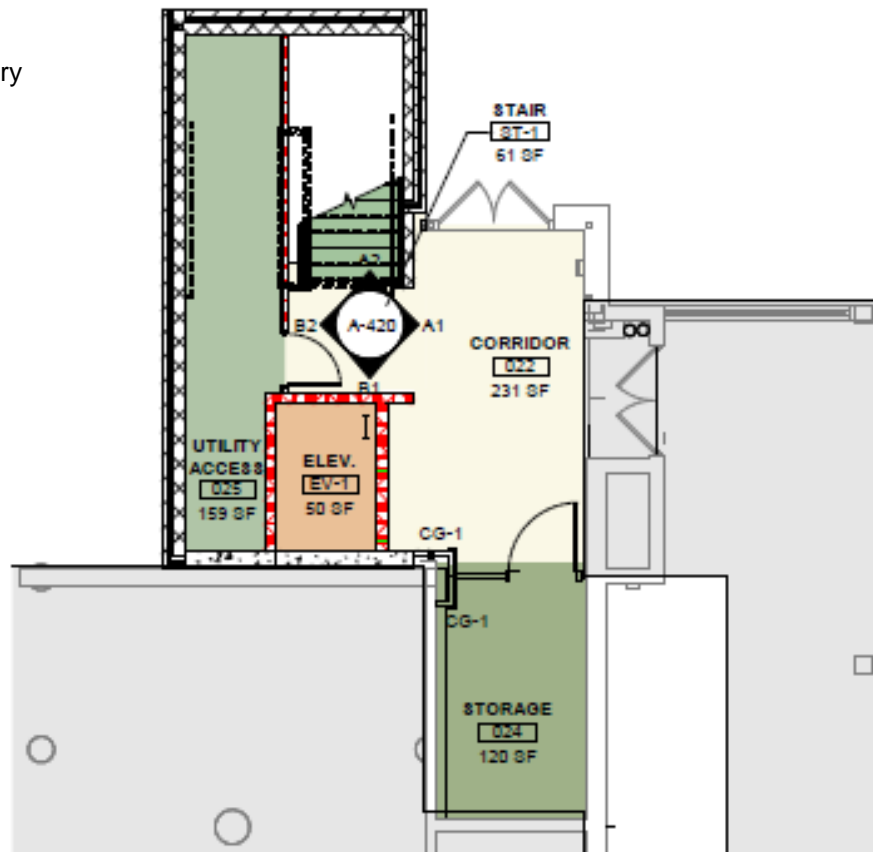
Resolution: Board of Education Decision on Staff
Recommendation Regional Opportunities for Thriving Schools
Thursday, November 10, 2022

GMP
\$1,713,656

Stein ES (Elevator/Stair Addition) HCM & CMGC Himmelman

Alameda: Emory → Lasley (Emory
Center Program → Rose Stein)

37 Week Design & Construction
Schedule



3/9/23 BOE Agenda

School Closings & Consolidations

Resolution: Board of Education Decision on Staff
Recommendation Regional Opportunities for Thriving Schools
Thursday, November 10, 2022

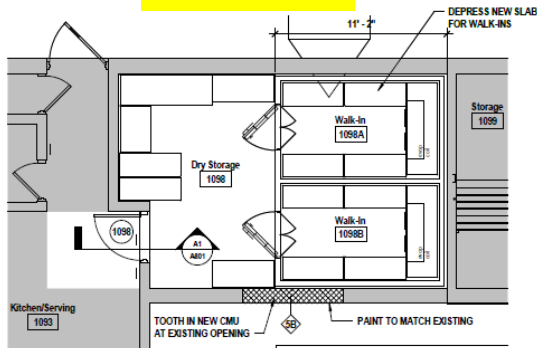
CD's

Kitchen Improvements

Kendallvue ES

H&M GC GTC

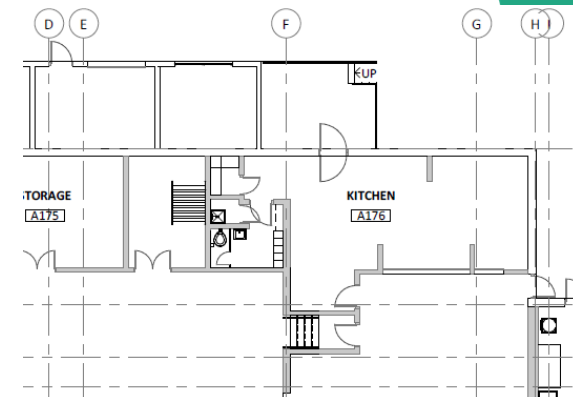
\$187,200



Receiving Schools Upgrades & Kitchen Improvements

Fremont ES
(Wilmore Davis Re-design)

Lukas ES
Eidos - CMGC Mark Young

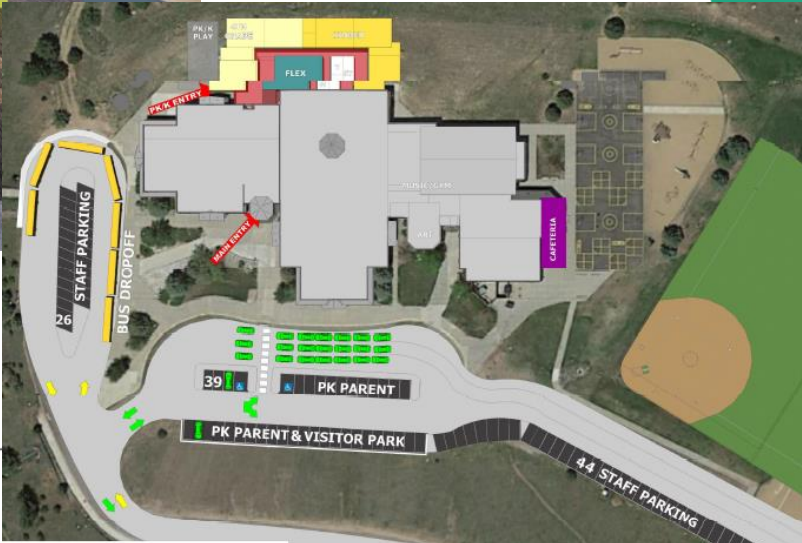


3/9/23 BOE Agenda

School Closings & Consolidations

Resolution: Board of Education Decision on Staff
Recommendation Regional Opportunities for Thriving Schools
Thursday, November 10, 2022

Bergen Valley ES - EUA & GC TBD



Effective July 1, 2024, Bergen Meadow K-2 will close and the grade configuration of Bergen Valley will be converted to a PK-5.

Next Meeting 3/16/23